

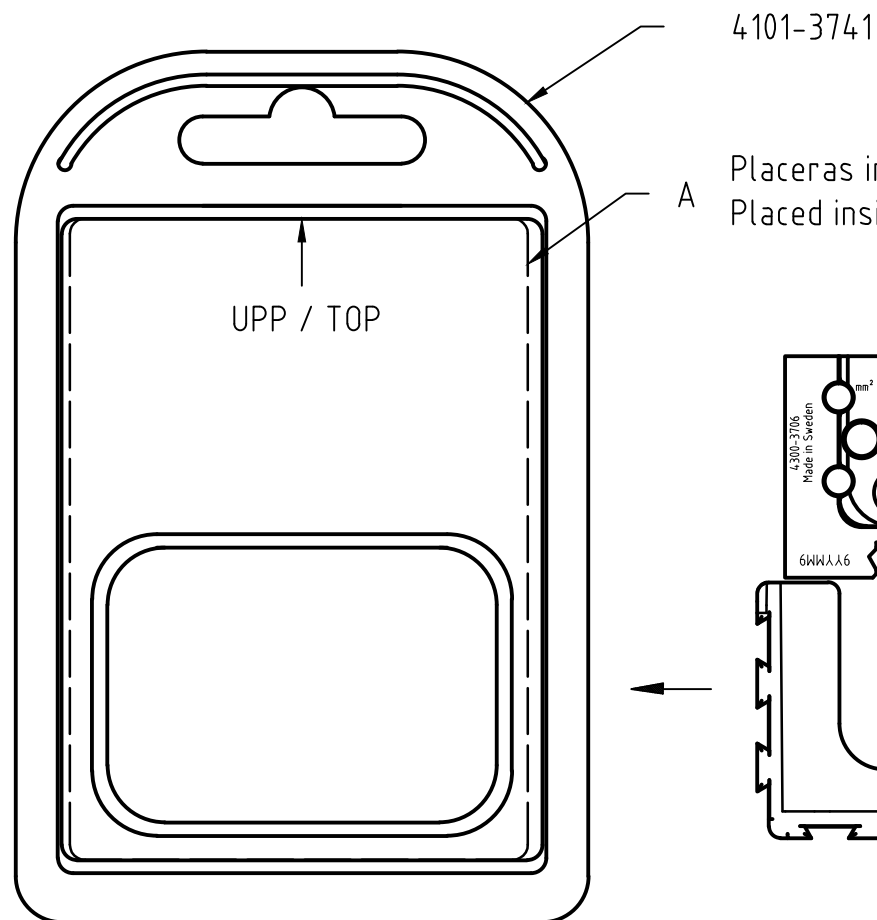
För icke direkt toleranssatta mått gäller toleransklass
 General tolerances if not otherwise stated

NOM DIM MM		TOL CLASS		
From	To	A	B	C
(1)	6	±0.05	±0.1	±0.2
(6)	30	±0.1	±0.2	±0.5
(30)	100	±0.15	±0.3	±0.8
(100)	300	±0.2	±0.5	±1.2
(300)	1000	±0.3	±0.8	±2

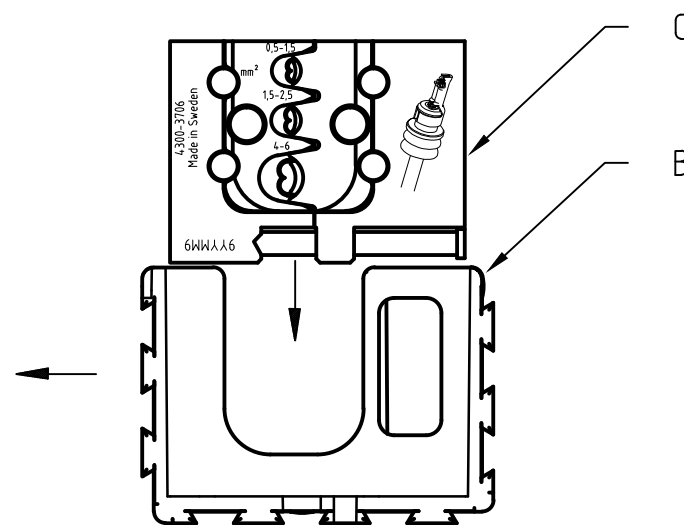
Hål / Holes H13

Skarpa kanter brutna där ej annat anges.
 No sharp edges unless otherwise specified.

Övriga generella toleranser enligt ritning 4100-4644.
 Additional general tolerances in accordance with drawing 4100-4644.



Placeras inuti vikbliset /
 Placed inside the clamshell



Pressback kompl. placeras i
 hållaren vid packning/

Die Compl. placed in
 holder when packaging

Packas i 10-packlåda E med etikett/kort D

4300-3706/AAB	4101-6640C	4101-3490	4300-3706	-	-
4300-3706			4101-6176		
ART.NR.VAR.	A	B	C	D	E

Material		Behandling/Treatment			Status Prel.utc.	
Konstr./Design OS	Ritad/Drawn MANO	Datum/Date 2012-02-29	Skala/Scale 1:1	Kontr./Checked IP	Godk./Approved NE	Ämne/Blank
pressmaster ®				Benämning/Denomination PRESSBACK DIE SET		Vikt/Weight, gran Art grp 011
ISO 9001 REG NR FM13687				Ritn nr/Drawing no 43003706		REV