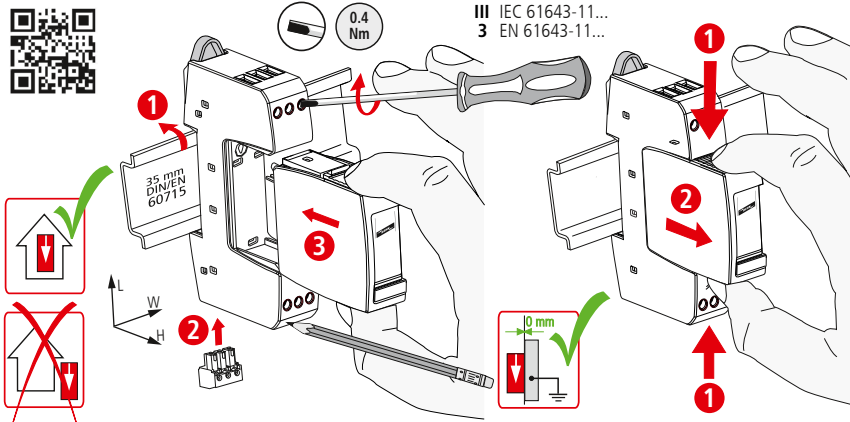


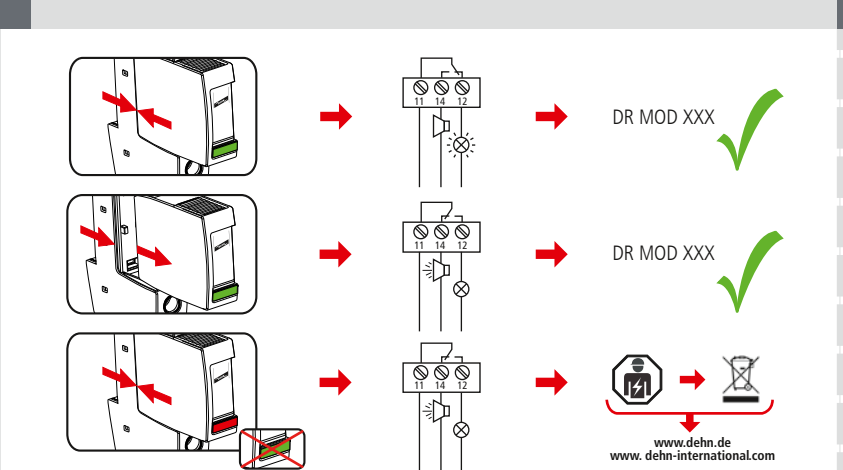
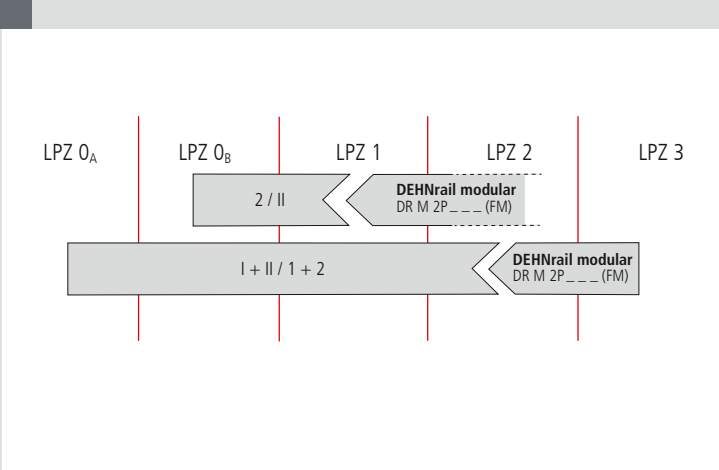
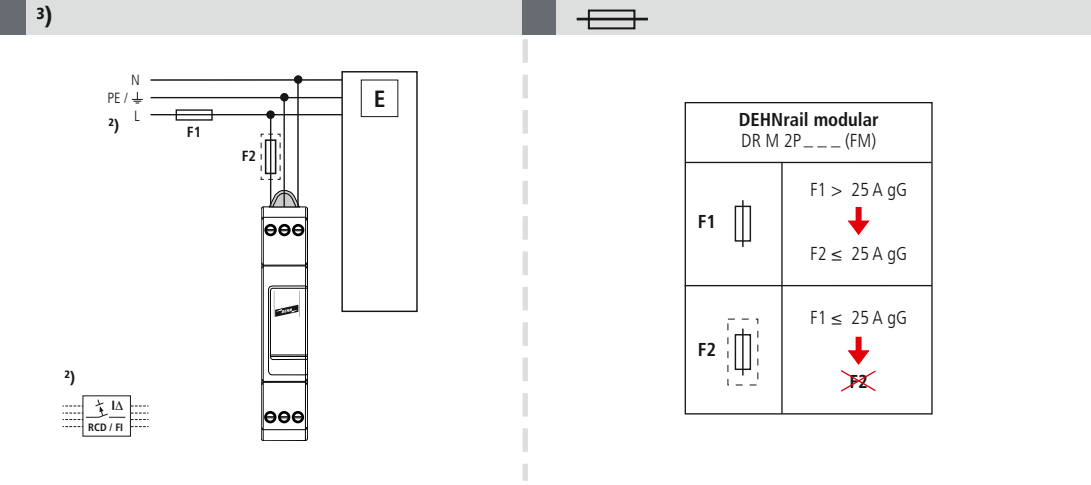
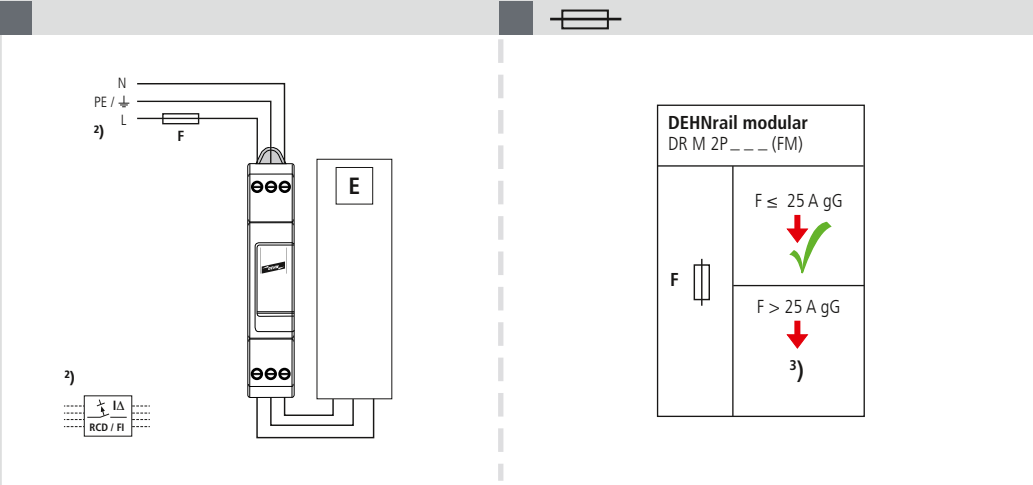
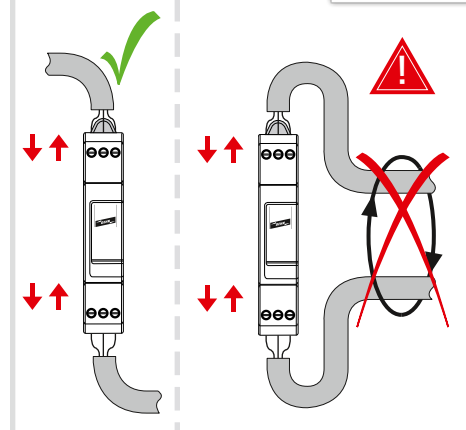


DEHNrail modular DR M 2P \_\_\_ (FM)

- DE Einbauanleitung
- GB Installation instructions
- IT Istruzioni di montaggio
- FR Instructions de montage
- NL Montagehandleiding
- ES Instrucciones de montaje
- PT Instruções de montagem
- DK Monteringsvejledning
- SE Monteringsanvisning
- FI Asennusohje
- GR Οδηγίες συναρμολόγησης
- PL Instrukcja montażu
- CZ Montážní návod
- TR Kurulum Talimatları
- RU Инструкция по монтажу
- CN 安装说明
- HU Szerelési útmutató
- JP 設置説明書



DR M 2P ___ (FM)	30	60	75	150	255
$U_N$ (50/60 Hz); Tol: 0V ... $U_c$	24 V	48 V	60 V	120 V	230 V
$U_c$ AC	30 V	60 V	75 V	150 V	255 V
$U_c$ DC	30 V	60 V	75 V	150 V	255 V
$I_{SCCR}$	6 kA <sub>ms</sub> (1 kA <sub>ms</sub> )				
max.	25 A gG (B 25 A)				
$\vartheta$	-40°C ... +80°C				
$\varphi$	5% ... 95%				
$I_{PE}$	< 5 $\mu$ A				
IP 1)	20				
L x W x H	90 mm x 18 mm x 73 mm				
		10 mm	10 mm		
min. □ 1, 2, 3, 4, ↓	0.5 mm <sup>2</sup>				
max. □ 1, 2, 3, 4, ↓	2.5 mm <sup>2</sup>		4 mm <sup>2</sup>		



DEHNrail modular DR M 2P ___ FM	
$U_N / I_N$	AC: 250 V / 0.5 A
	DC: 250 V / 0.1 A 125 V / 0.2 A 75 V / 0.5 A
	max. 1.5 mm <sup>2</sup>

