



DEHNguard®modular DG M TNC CI 275 (FM)

DG M TNS CI 275 (FM)

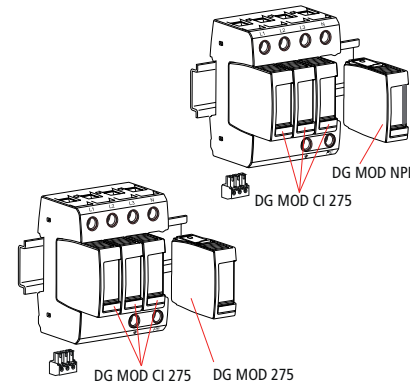
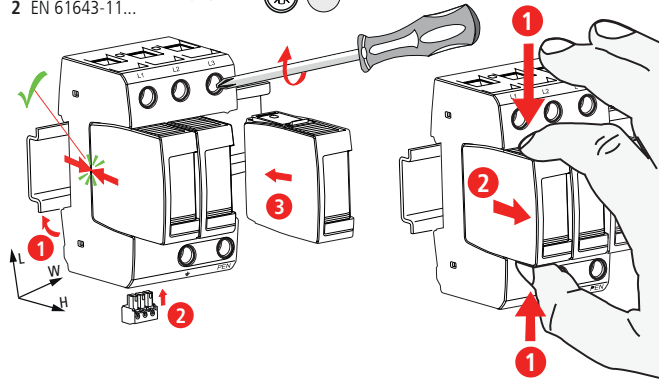
DG M TT CI 275 (FM)

- DE Einbauanleitung
- GB Installation instructions
- IT Istruzioni di montaggio
- FR Instructions de montage
- NL Montagehandleiding
- ES Instrucciones de montaje
- PT Instruções de montagem
- DK Monteringsvejledning
- SE Monteringsanvisning
- FI Asennusohje
- GR Οδηγίες συναρμολόγησης
- PL Instrukcja montażu
- CZ Návod k montáži
- TR Montaj kılavuzu
- RU Инструкция по монтажу
- CN 安装说明
- HU Szerelési útmutató
- JP 設置説明書



II IEC 61643-11...
2 EN 61643-11...

Pozidriv®Z2 (4 Nm)

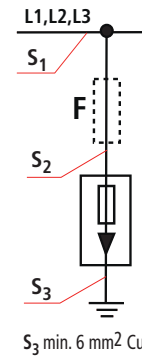
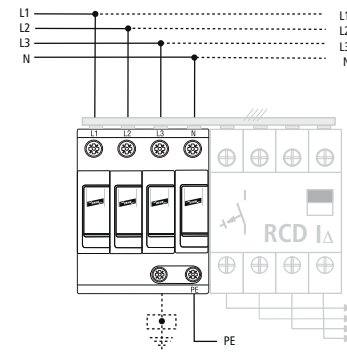
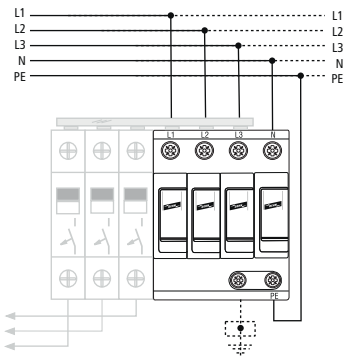
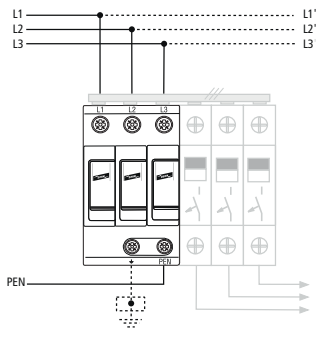


	DG M TNC CI 275 (FM)		DG M TNS CI 275 (FM)		DG M TT CI 275 (FM)	
	L-PEN	L-PE	N-PE	L-N	N-PE	
DG MOD CI 275	DG MOD CI 275	DG MOD 275	DG MOD CI 275	DG MOD NPE		
U_N	230 / 400 V; Tol.: 0V ... U_C					
U_C	275 V					255V
f_N	50/60 Hz					
I_{SCCR}	25 kArms					---
I_h	---					100 Arms
T_{max} (8/20µs)	25 kA					
θ°	-40°C ... +80°C					
ϕ	5% ... 95%					
T_{PE}	< 0,15 mA					< 5 µ
IP *)	20					
L x W x H	90 mm x 54 mm x 73 mm		90 mm x 72 mm x 73 mm			
min. \square L, N, PE(N), \perp	12 mm		12 mm		12 mm	
max. \square L, N, PE(N), \perp	25 mm ²		1,5 mm ²		35 mm	
\square \triangle			16 mm ² Cu $\geq 15,5$ mm			

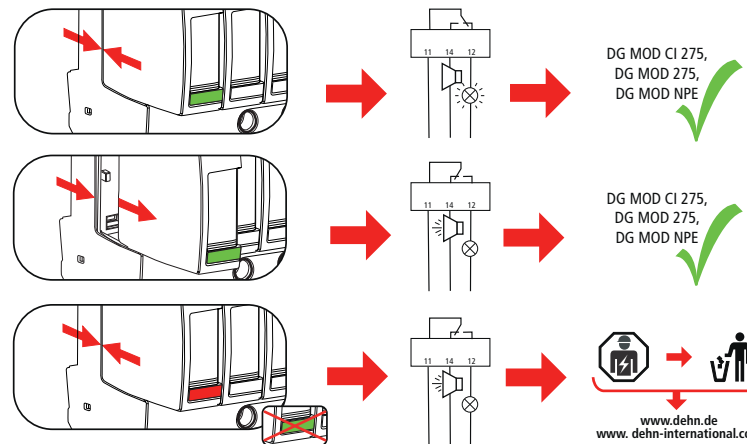
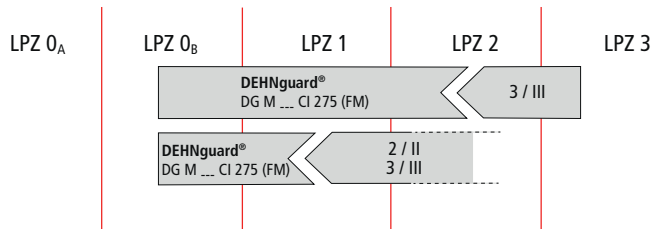
TN-C DG M TNC CI 275 (FM)

TN (-C) -S DG M TNS CI 275 (FM)

TT DG M TT CI 275 (FM)



S_1 / mm ²	max. I_k	S_2 / mm ²	S_3 / mm ²	
≤ 25 mm ²	≤ 25 kA	$= S_1$	$= S_1$ min. 6 mm ²	
≤ 35 mm ²				
> 25 mm ²	≤ 25 kA	16 mm ² ²⁾	16 mm ²	
> 35 mm ²				



DEHNguard®modular DG M TNC CI 275 FM, DG M TNS CI 275 FM, DG M TT CI 275 FM

	U_N / I_N	AC: 250 V / 0,5 A
		DC: 250 V / 0,1 A 125 V / 0,2 A 75 V / 0,5 A

max. 1,5 mm²

