



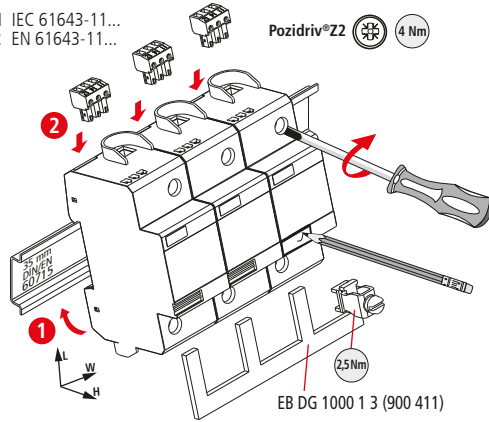
DEHNguard® DG 1000 (FM)

- DE Einbauanleitung
- GB Installation instructions
- IT Istruzioni di montaggio
- FR Instructions de montage
- NL Montagehandleiding
- ES Instrucciones de montaje
- PT Instruções de montagem
- DK Monteringsvejledning
- SE Monteringsanvisning
- FI Asennusohje
- GR Οδηγίες συναρμολόγησης
- PL Instrukcja montażu
- CZ Montážní návod
- TR Kurulum Talimatları
- RU Инструкция по монтажу
- CN 安装说明
- HU Szerelési útmutató
- JP 設置説明書



IEC 61643-11...
2 EN 61643-11...

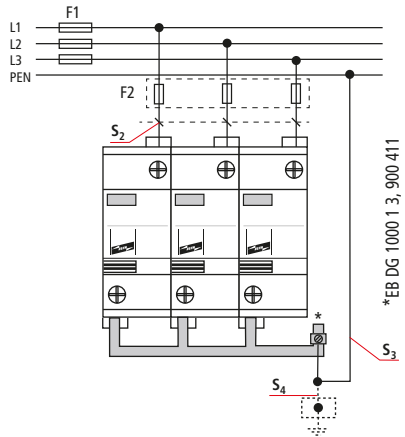
Pozidriv®Z2 4 Nm



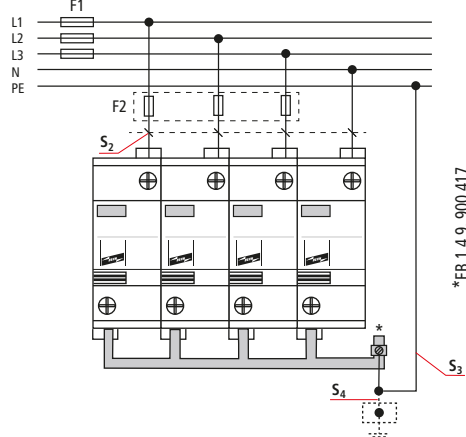
DG 1000 (FM)	
U_N /Tol.: + 10%	830 V ~
U_C	1000 V ~
f_N	50 / 60 Hz
I_{SCCR}	25 kArms
I_{max}	30 kA (8/20 μ s)
max. I_{sc}	100 A aM
ϑ°	-40°C ... +80°C
φ	5% ... 95%
I_{PE}	≤ 0,6 mA
IP 1)	20
L x W x H	103 mm x 36 mm x 65 mm
$U_{C, DC}$	1000 V-
max. I_{sc}	80 A gPV
I_{SCCR}	5000 A-

min. □ L, N	1.5 mm ²		
max. □ L, N	25 mm ²	35 mm ²	

TN-C



TN (-C)-S



DEHNguard® DG 1000 (FM)	$U_{max} \leq 1000$ V ac	$U_{max} \leq 690$ V ac
F1	F1 > 100 A aM F2 ≤ 100 A aM	F1 > 125 A aM F2 ≤ 125 A aM
F2	F1 ≤ 100 A aM F2	F1 ≤ 125 A aM F2

DEHNguard® DG 1000 (FM)				
F1 A gG	S ₂ / mm ²	S ₃ / mm ²	S ₄ / mm ²	F2 A gG
25	2,5	6	6	...
35	4	6	6	...
40	4	6	6	...
50	6	6	6	...
63	10	10	10	...
80	10	10	10	...
100	16	16	16	...
125	16	16	16	...
> 125	16	16	16	125

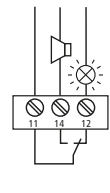
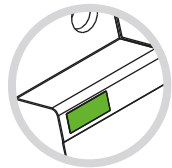
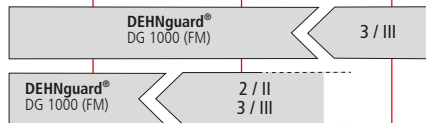
LPZ 0_A

LPZ 0_B

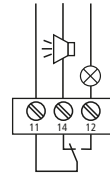
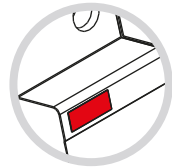
LPZ 1

LPZ 2

LPZ 3



DEHNguard® DG 1000 (FM)



www.dehn.de
www.dehn-international.com

