



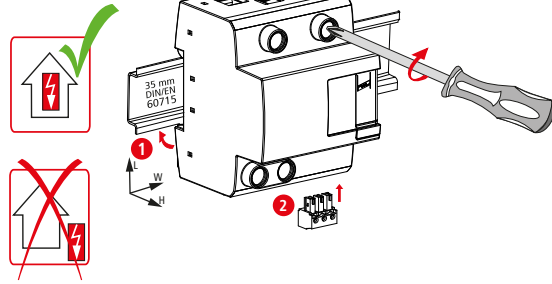
DEHNcombo® DCB YPV SCI ... (FM)

- DE Einbauanleitung
- GB Installation instructions
- IT Istruzioni di montaggio
- FR Instructions de montage
- NL Montagehandleiding
- ES Instrucciones de montaje
- PT Instruções de montagem
- DK Monteringsvejledning
- SE Monteringsanvisning
- FI Asennusohje
- GR Οδηγίες συναρμολόγησης
- PL Instrukcja montażu
- CZ Návod k montáži
- TR Montaj kılavuzu
- RU Инструкция по монтажу
- CN 安装说明
- HU Szerelési útmutató
- JP 設置説明書



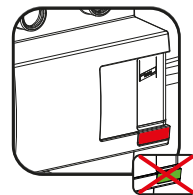
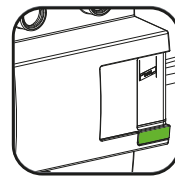
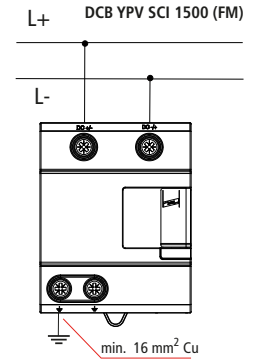
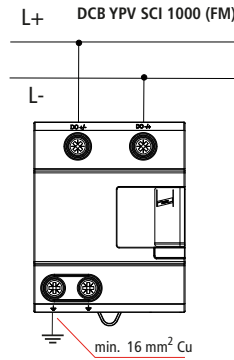
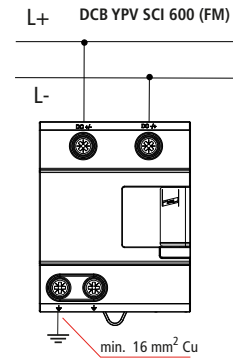
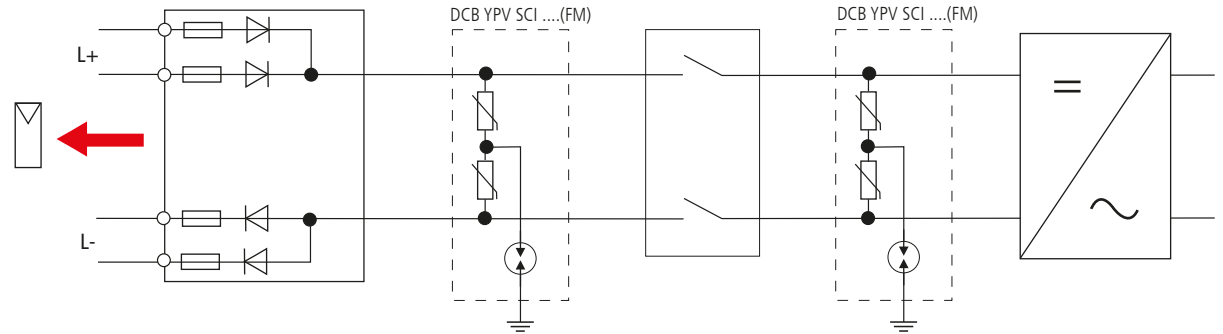
I+II IEC 61643-11... Pozidriv®Z2 (4 Nm)

1+2 EN 61643-11...



	DCB YPV SCI 600 (FM)	DCB YPV SCI 1000 (FM)	DCB YPV SCI 1500 (FM)
$U_{CPV} (DC+ \leftrightarrow DC-)$	≤ 600 V DC	≤ 1000 V DC	≤ 1500 V DC
$U_{CPV} (DC+/DC- \leftrightarrow PE)$	≤ 450 V DC	≤ 725 V DC	≤ 1100 V DC
I_{total}		12,5 kA (10/350)	
I_{imp}		6,25 kA (10/350)	
I_n		15 kA (8/20)	
I_{scpv}		1000 A	
$I_{PE, AC/DC}$		≤ 25 μ A	
θ°		-40°C ... +80°C	
Φ		5% ... 95%	
IP 1)		20	
failure behavior Ausfallverhalten		open circuit Abtrennung	
L x W x H	72 mm x 90 mm x 73 mm		

min. <input type="checkbox"/> DC+ / -, DC-/+	12 mm	12 mm	12 mm
	1.5 mm ²		
max. <input type="checkbox"/> DC+ / -, DC-/+	25 mm ²	35 mm ²	
<input type="checkbox"/>	16 mm ² Cu	≥ 15 mm	



DCB YPV SCI ... FM	
U_N / I_N	AC: 250 V / 0.5 A
U_N / I_N	DC: 250 V / 0.1 A 125 V / 0.2 A 75 V / 0.5 A
0.2 Nm	
max. 1.5 mm ²	

www.dehn.de
www.dehn-international.com

