

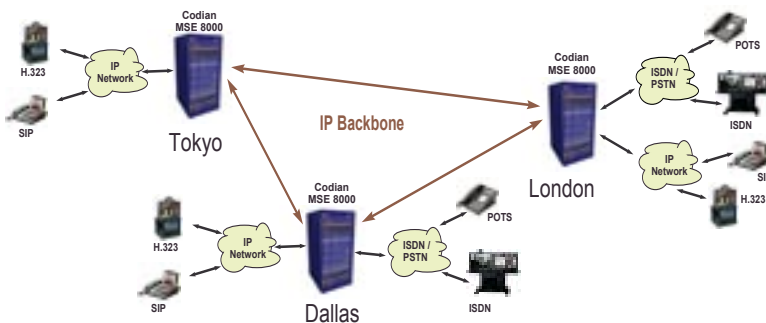


The Codian MSE 8000 is a powerful, fault-tolerant video conferencing solution, designed for large scale video communication. This carrier-class chassis supports up to 10 blades and 1 Gbit/s of audio/video conferencing and delivers over 10 times the throughput of existing solutions. The MSE 8000 is ideal for service providers, large commercial enterprises and government installations.

### High Availability

The MSE 8000 is a highly fault-tolerant ETSI/NEBS 3 chassis with redundant power supplies, fans and hot swappable option blades. Intelligent fail-over and easy to use system management makes the MSE 8000 the natural choice for any mission-critical video conferencing.

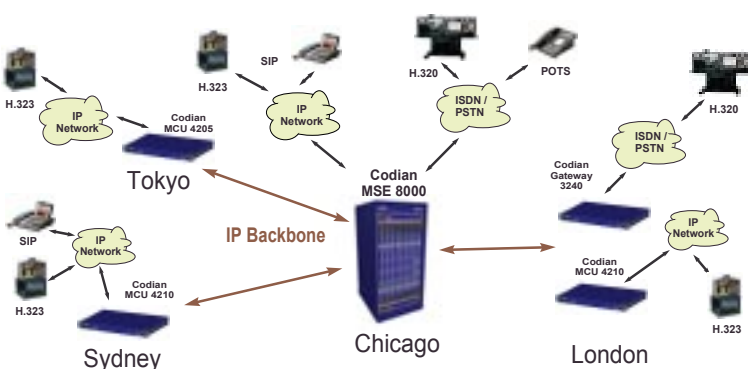
### MSE 8000 Service Provider



### High Performance Conferencing

The MSE 8000 supports up to 360 ports of multipoint video conferencing (each at up to 4 Mbit/s with no loss of port count), 72 ports of ISDN T1/E1 or 90 ports of H.323 conference recording in a single chassis. Each port can support a different compression algorithm (H.261, H.263 or H.264), a different view (continuous presence layout) for the user and a different data rate. The result is over 1 Gbit/s of video conferencing in a single chassis.

### MSE 8000 Enterprise



### Scalable, Multi Service, Multi Protocol

Option blades are available for multipoint video and audio, ISDN, conference recording and streaming. Video data rates from 56 kbit/s to 4 Mbit/s are supported with no loss of port count. CIF and 4CIF video resolutions with upgrades to High-Definition are available. Supports combined H.323 and SIP for mixed environments and to facilitate migration. Offers proven support for all leading IP and ISDN endpoints.

## Chassis components

Part	Description
MSE 8000 Chassis	10 slot media services engine chassis with high speed backplane
MSE 8010 Fan tray	Hot-swap fan tray (for use in both top and bottom slots) with environmental monitoring
MSE 8020 PSU tray	Power supply tray to take 2 MSU 8021 PSU modules
MSU 8021 PSU module	100-240 VAC hot swappable power supplies to fit MSU 8020 PSU tray

## Option Blades

Part	Description
MSE 8050 Supervisor	Supervisor blade, required for system management and configuration
MSE 8420 Media 40	40 ports of video plus 40 ports of audio multipoint conference
MSE 8320 ISDN 8	8 ports E1 or T1 PRI ISDN
MSE 8220 VCR 10	10 ports of H.323 video recording with streaming server

### Chassis

10 hot swappable option slots  
Redundant and hot-swap fan trays  
One plus one redundant and hot swappable power supplies  
Dual 48 volt power option  
Active environmental monitoring  
High speed back plane and management bus

### Reliability

Fault-tolerant, high availability chassis  
Intelligent fail-over  
Distributed conferences

### System Management

Comprehensive system management  
RS-232 for local control and diagnostics  
Telnet and Syslog for diagnostics  
Configurable event logs and full H.323 decoding  
Configuration backup  
Secure upgrades through Ethernet  
SNMP and XML API for third party integration

### Security Features

Administrator, User and Guest passwords  
Password protected conferences and streaming  
DTMF passwords for H.323 endpoints  
Secure non PC hardware and operating system  
AES encryption, 128 bit key, H.235  
Video Firewall option

### Capacity

More than 1 Gbit/s of conferencing bandwidth  
Up to 360 ports of video conferencing  
Up to 72 ports of T1/E1 gateway  
Up to 90 ports of video conference recording  
No loss in port count due to IP bandwidth, resolution, codec or multipoint conference layout.

### Video

H.261, H.263, H.263+, H.263++, H.264  
QCIF, QSIF, CIF, SIF, I SIF, ICIF, 4CIF, 4SIF, VGA, XGA, HD (720p)  
Up to 30 fps in all modes  
56kbit/s to 4Mbit/s  
Transcoding and transrating

### Audio

G.711, G.722, G.728, G.729, G.723.1, G.722.1, MP4 AAC  
Audio transcoding

### Protocols

H.323 v4, SIP, H.320, H.221, BONDING (ISO 13871), H.239 (dual video), ftp, Telnet, RTP, RTSP, HTTP, DHCP

### Multipoint conferencing

H.323 dial in, or dial out from web server  
Stand alone or using Gatekeeper  
Configurable audio and video Auto Attendant  
Advanced Continuous Presence as standard  
Automatic selection of best layout  
Individual layout selection using remote control or web pages  
Over 50 custom layouts  
Widescreen (16:9) support  
Active speaker selection using remote control or voice activated  
Floor assignment through web page  
Far end camera control tunnelling using remote control or web  
On-screen text messaging and site identification  
Conference scheduling and reservation  
Ad Hoc conferences  
Dual video using H.239  
Presentation mode: add slides from PC using VNC™  
Preview of conference and individual camera on web pages

### Recording

From H.323 end point, MCU or Gateway  
H.323 dial in, or dial out  
Data from H.239 (dual video) capable endpoints  
Record video at multiple bandwidths  
Stream live, on demand, to a PC, H.323 playback

### Streaming

Embedded streaming server  
H.261, H.263+, H.263++, H.264 video  
Viewed using RealPlayer™, QuickTime™ and Windows Media Player™  
Streaming of slides (H.239 and VNC™)  
High Definition streaming  
Stream live or recorded content  
Stream at multiple bandwidths, Unicast and Multicast

### ISDN

Up to 8 ISDN PRI interfaces per option blade  
Automatic downspeeding on loss of ISDN B channels  
H.320 calls up to 768kbit/s  
Total bandwidth and number of sites supported is limited only by ISDN capacity  
Direct Inward Dialing (DID)  
Interactive Voice Response (IVR) / Video Auto Attendant (AA)  
TCS-4, Default (Operator) extension  
Call routing to MCU / multipoint conferencing bridge  
Digit manipulation / flexible dial plan  
Dial by E.164 address  
Digit manipulation / flexible dial plan



### Codian Inc

1570 The Alameda #216  
San Jose CA 95126  
USA  
Tel: (408) 287 6628  
Fax: (408) 287 6630

### Codian Ltd

1 Elder Way  
Langley Business Park  
Slough SL3 6EP  
United Kingdom  
Tel: +44 (0)1753 548 333  
Fax: +44 (0)1753 548 303

### Codian (Asia Pacific) Ltd

Suite 1606, Saxon Tower  
7 Cheung Shun Street  
Cheung Sha Wan  
Kowloon  
Hong Kong  
Tel: +852 3583 1430  
Fax: +852 3583 1055

[www.codian.com](http://www.codian.com)

Not all features are available in the initial product release but will be made available through future software releases

© Copyright 2005 Codian Ltd. All trademarks are the property of their respective owners