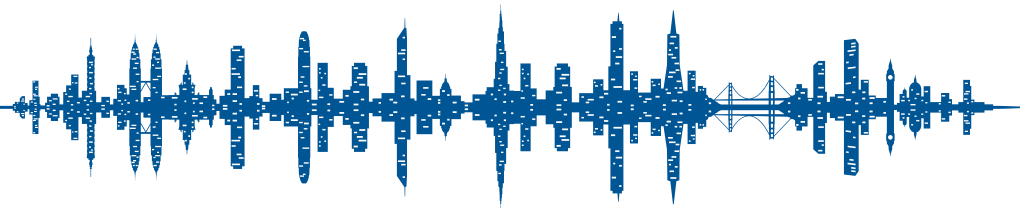




plantronics®

Electronic Hook Switch Guide



SAVI® 700 SERIES | CS500™/CS500 XD SERIES | MDA200™ | VOYAGER LEGEND® CS

Electronic Hook Switch Guide Contents

Electronic Hook Switch Cables (EHS) provide remote desk phone call control (answer/end) with your Plantronics wireless headset system (or the MDA200™ headset hub). We offer cables that are compatible with many of the most popular office desk phones.

We also have a handset lifter accessory that can be used with most desk phones that are not compatible with one of our EHS cables.

Visit Plantronics.com for more information.



1
Aastra Phone Models



8
Polycom Phone Models



2
Alcatel-Lucent Phone Models



9
ShoreTel Phone Models



3 - 4
Avaya Phone Models
(now including Tenovis
Phone Models)



10
Siemens Enterprise
Communications – now Unify
Phone Models



5 - 6
Cisco Phone Models



11
Toshiba Phone Models



7
NEC Phone Models

Electronic Hook Switch for Aastra®

Aastra



Desk Phone Models

5370	6739i	6757i CT	6775
5380	6753i	6771	6775 IP
5370 IP	6755i	6773	
5380 IP	6757i	6773 IP	


EHS Cable

APS-11*
PN: 37818-11




* APS-11 replaces APS-10


Plantronics Audio Solutions




Savi® 700 Series
Wireless headset system manages PC, mobile and desk phone calls



CS500™ / CS500 XD™ Series
Wireless headsets manage desk phone calls



MDA200™
Enables USB connectivity to the desk phone to manage both PC and desk phone calls

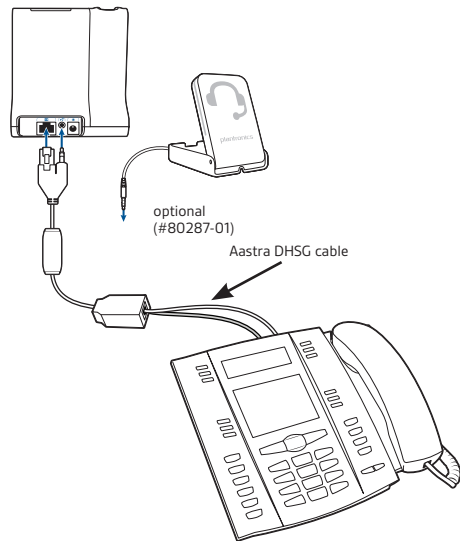


Voyager Legend® CS
Wireless Bluetooth headset system manages desk phone and mobile calls

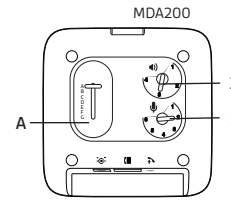
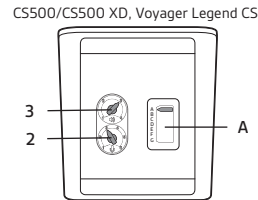
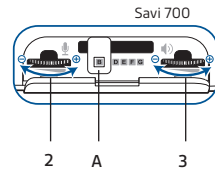
EHS Setup Use the EHS setup below to automatically answer a desk phone call by pressing a button on your Savi 700 Series, CS500/CS500 XD Series or Voyager Legend CS headset or MDA200.

Aastra models: 5370, 5380, 5370 IP, 5380 IP, 6739i, 6753i, 6755i, 6757i, 6757i CT, 6771, 6773 IP, 6775, 6775 IP

Setup



Configuration



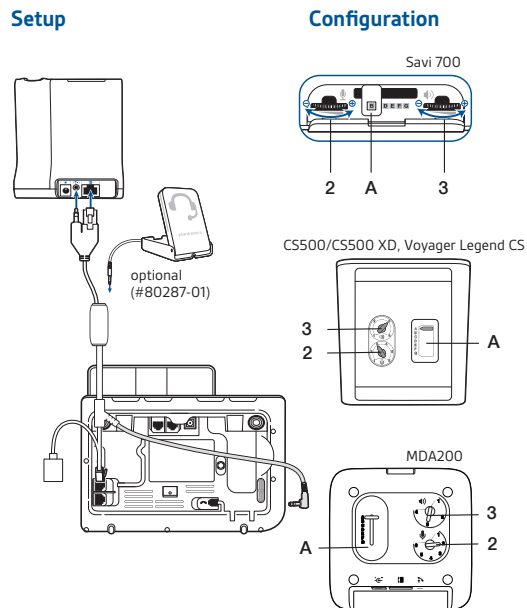
Only the Aastra DHSG cable should be connected directly to your phone. No 3rd party DHSG cables should be connected directly to the Aastra IP phone.

Electronic Hook Switch for Alcatel-Lucent

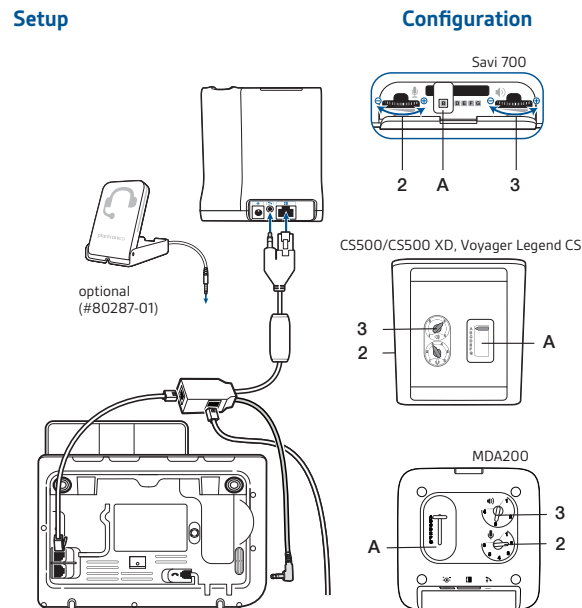
<p>Alcatel-Lucent</p>  <p>Desk Phone Models Touch 4029 My IC 8082 Touch 4039 OmniTouch 8082 MyIC IP Touch 4028 IP Touch 4038 IP Touch 4068</p>	<p>EHS Cable</p>  <p>APA-23* PN: 38908-11</p> <p><small>*APA-23 replaces APA-20 and APA-22</small></p>	<p>Plantronics Audio Solutions</p> <div style="display: flex; justify-content: space-around;"> <div data-bbox="955 324 1134 519">  <p>Savi 700 Series Wireless headset system manages PC, mobile and desk phone calls</p> </div> <div data-bbox="1239 324 1417 519">  <p>CS500/CS500 XD Series Wireless headsets manage desk phone calls</p> </div> <div data-bbox="1480 349 1690 519">  <p>MDA200 Enables USB connectivity to the desk phone to manage both PC and desk phone calls</p> </div> <div data-bbox="1774 316 1942 519">  <p>Voyager Legend CS Wireless Bluetooth headset system manages desk phone and mobile calls</p> </div> </div>
--	--	---

EHS Setup Use the EHS setup below to automatically answer a desk phone call by pressing a button on your Savi 700 Series, CS500/CS500 XD Series or Voyager Legend CS headset or MDA200.

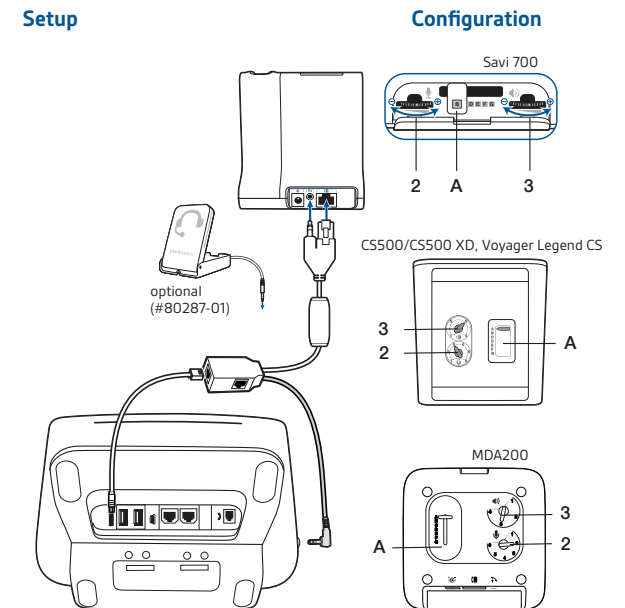
Alcatel-Lucent models: IP Touch (4028, 4038, 4068)



Alcatel-Lucent models: Touch (4029, 4039)




Alcatel-Lucent models: My IC 8082, OmniTouch 8082 MyIC



Electronic Hook Switch for Avaya®

Avaya




APV-63 Cable	
1408	9608 9670
1416	9611 9620L
1608	9620 2410
1616	9621 4630
9404	9630 6416D+M
9406	9640 6424D+M
9504	9641G
9508	9650

APV-66 Cable	
1120E	2420 4621SW 5420
1140E	4610 4622SW 5610
1150E	4610SW 4625SW 5620
1165E	4620 4630SW 5621
	4620SW

APU-71 Cable	
1120E	
1140E	
1150E	
1165E	

EHS Cable







APV-63*
PN: 38734-11

APV-66*
PN: 38633-11

APU-71*
PN: 83018-11

* APV-63 replaces APV-62; APV-66 replaces APV-65; APU-71 has replaced APU-70

Plantronics Audio Solutions

Savi 700 Series
Wireless headset system manages PC, mobile and desk phone calls

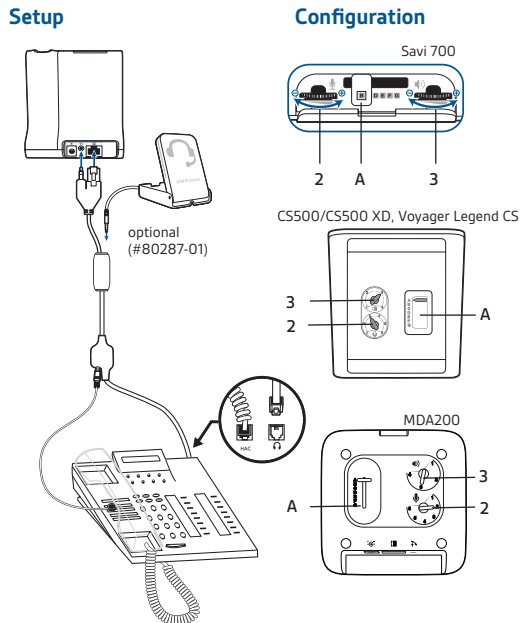
CS500/CS500 XD Series
Wireless headsets manage desk phone calls

MDA200
Enables USB connectivity to the desk phone to manage both PC and desk phone calls

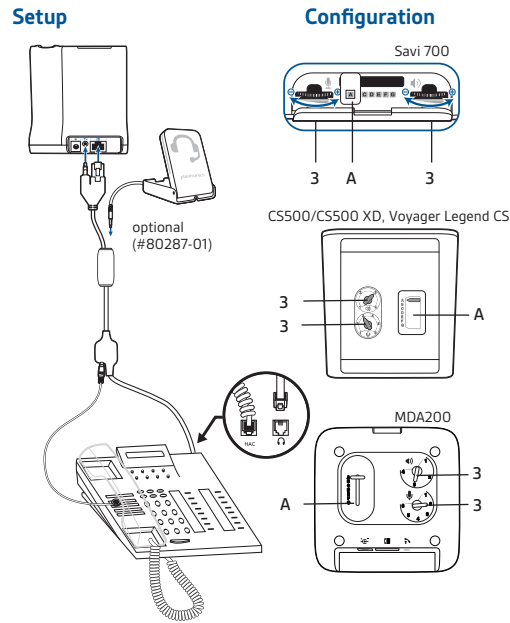
Voyager Legend CS
Wireless Bluetooth headset system manages desk phone and mobile calls

EHS Setup Use the EHS setup below to automatically answer a desk phone call by pressing a button on your Savi 700 Series, CS500/CS500 XD Series or Voyager Legend CS headset or MDA200.

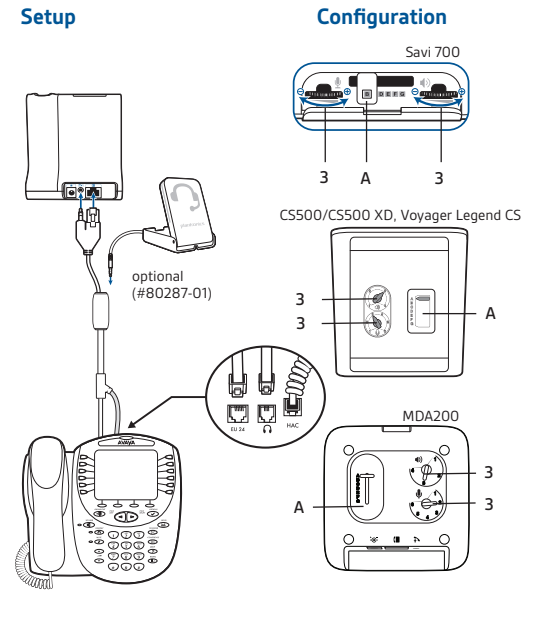
Avaya models: 1120E, 1140E, 1150E, 1165E, 1408, 1416, 1608, 1616, 9404, 9406, 9504, 9508, 9608, 9611, 9620, 9621, 9630, 9640, 9641G, 9650, 9670, 9620L



Avaya models: 2410, 4630, 6416D+M, 6424D+M



Avaya models: 2420, 4610, 4610SW, 4620, 4620SW, 4621SW, 4622SW, 4625SW, 4630SW, 5420, 5610, 5620, 5621



Electronic Hook Switch for Avaya

Tenoris



Desk Phone Models

- T3 Classic with Interface Adapter
- T3 IP Classic
- T3 IP II Classic
- T3 IP Classic with Interface Adapter
- TH13
- TM13
- TS13
- T3 Compact
- T3 IP Comfort
- T3 IP II Comfort
- OS 13
- OS33

EHS Cable



APT-31*
PN: 37820-11

** APT-31 replaces APT-30*

Plantronics Audio Solutions



Savi 700 Series
Wireless headset system manages PC, mobile and desk phone calls



CS500/CS500 XD Series
Wireless headsets manage desk phone calls



MDA200
Enables USB connectivity to the desk phone to manage both PC and desk phone calls

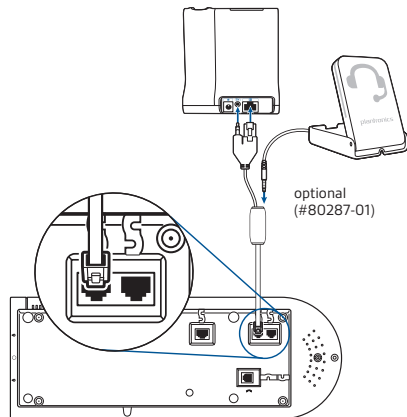


Voyager Legend CS
Wireless Bluetooth headset system manages desk phone and mobile calls

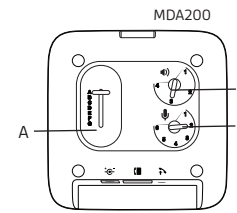
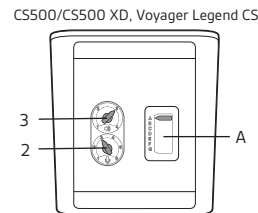
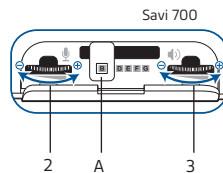
EHS Setup Use the EHS setup below to automatically answer a desk phone call by pressing a button on your Savi 700 Series, CS500/CS500 XD Series or Voyager Legend CS headset or MDA200.

Tenoris models: T3 Classic with Interface Adapter, T3 IP Classic, T3 IP II Classic T3 Classic with Interface Adapter, TH13, TM13, TS13, T3 Compact, T3 IP Comfort, T3 IP II Comfort, OS 13, OS33

Setup



Configuration



Electronic Hook Switch for Cisco®

Cisco



APC-41 Cable
7942G 7965G
7945G 7975G
7962G

APC-42 Cable
7942G 7965G
7945G 7975G
7962G 6945

APU-71 Cable
8961
9951
9971



EHS Cable

APC-41*
PN: 38350-11

APC-42
PN: 38350-12





APU-71*
PN: 83018-11



* APC-41 replaces APC-40; APU-71 has replaced APU-70



Plantronics Audio Solutions

Savi 700 Series
Wireless headset system manages PC, mobile and desk phone calls

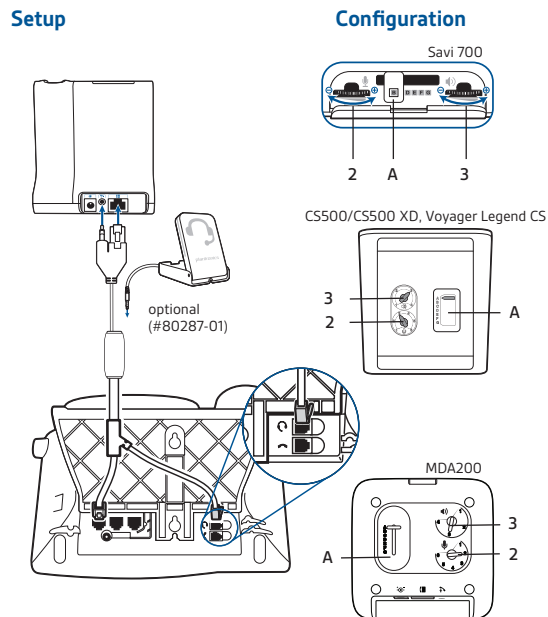
CS500/CS500 XD Series
Wireless headsets manage desk phone calls

MDA200
Enables USB connectivity to the desk phone to manage both PC and desk phone calls

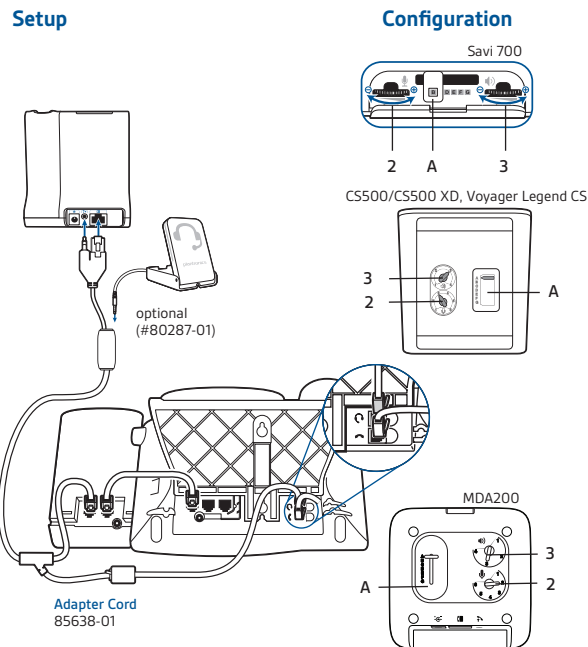
Voyager Legend CS
Wireless Bluetooth headset system manages desk phone and mobile calls

EHS Setup Use the EHS setup below to automatically answer a desk phone call by pressing a button on your Savi 700 Series, CS500/CS500 XD Series or Voyager Legend CS headset or MDA200.

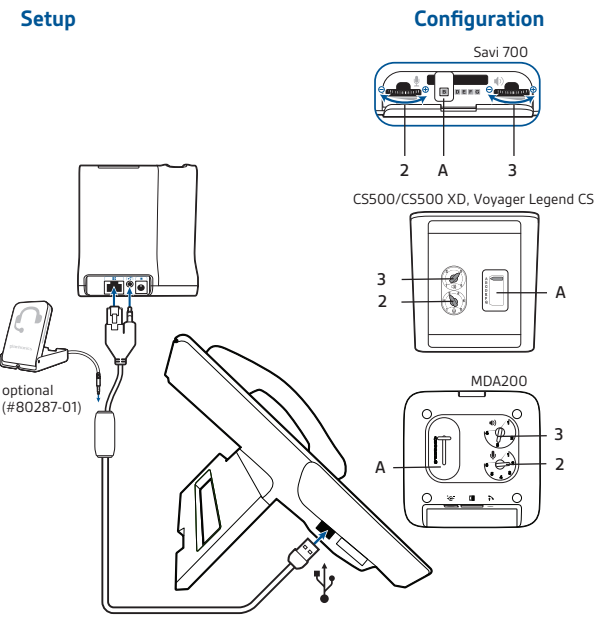
Cisco models: 7942G, 7945G, 7962G, 7965G, 7975G, 6945










Cisco models: 7942G, 7945G, 7962G, 7965G, 7975G, 6945
Installation with sidcar



Cisco models: 8961, 9951, 9971



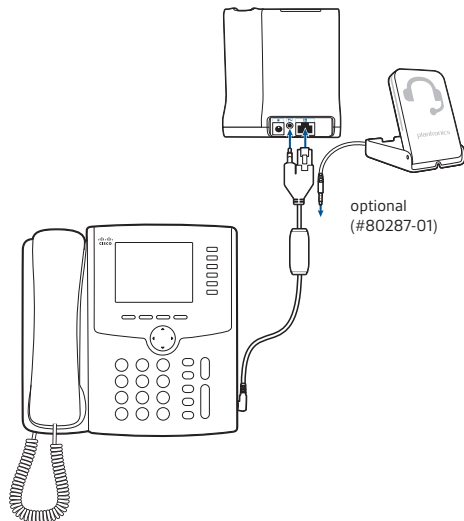
Electronic Hook Switch for Cisco®

<p>Cisco</p>  <p>APC-45 Cable SPA512 SPA514 SPA525G2</p> <p>APC-82 Cable 8941 8945</p>	+	<p>EHS Cable</p> <p>APC-45 P/N: 87317-01</p>  <p>APC-82 PN: 201081-01</p> 	+	<p>Plantronics Audio Solutions</p> <div style="display: flex; justify-content: space-around;"> <div data-bbox="1228 341 1354 487">  <p>Savi 700 Series Wireless headset system manages PC, mobile and desk phone calls</p> </div> <div data-bbox="1417 332 1543 487">  <p>CS500/CS500 XD Series Wireless headsets manage desk phone calls</p> </div> <div data-bbox="1606 381 1753 495">  <p>MDA200 Enables USB connectivity to the desk phone to manage both PC and desk phone calls</p> </div> <div data-bbox="1837 324 1963 487">  <p>Voyager Legend CS Wireless Bluetooth headset system manages desk phone and mobile calls</p> </div> </div>
--	---	---	---	---

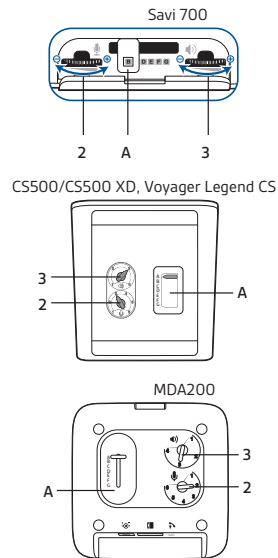
EHS Setup Use the EHS setup below to automatically answer a desk phone call by pressing a button on your Savi 700 Series, CS500/CS500 XD Series or Voyager Legend CS headset or MDA200.

Cisco models: SPA512, SPA514, SPA525G2

Setup

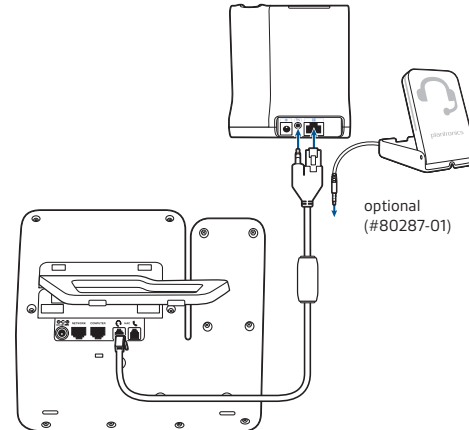


Configuration

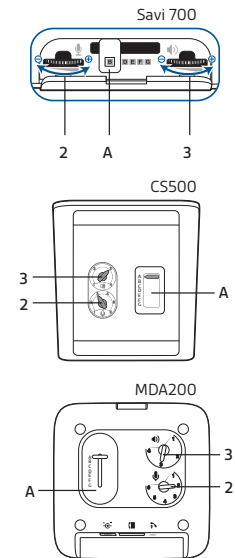


Cisco models: 8941, 8945

Setup




Configuration



Electronic Hook Switch for NEC®

NEC



Desk Phone Models

DSX 34B BL	DTL series
DSX 34B FDX	DT 330
DTR series	DT 730
DTH series	DT750



EHS Cable



APN-91
PN: 89280-11



Plantronics Audio Solutions



Savi 700 Series
Wireless headset system manages PC, mobile and desk phone calls



CS500/CS500 XD Series
Wireless headsets manage desk phone calls



MDA200
Enables USB connectivity to the desk phone to manage both PC and desk phone calls

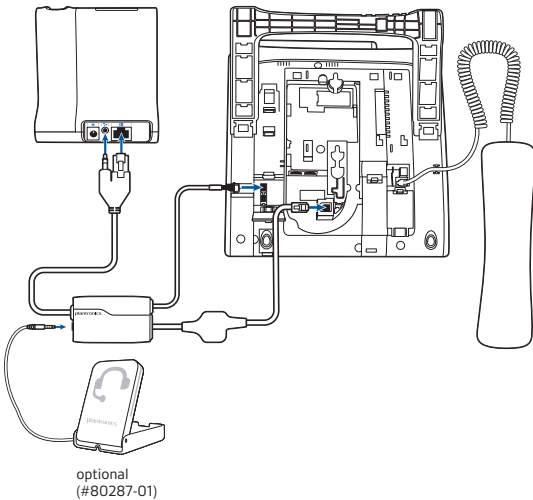


Voyager Legend CS
Wireless Bluetooth headset system manages desk phone and mobile calls

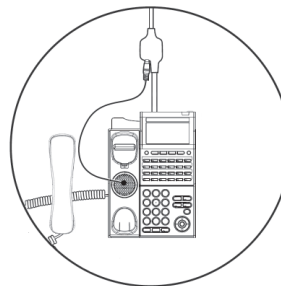
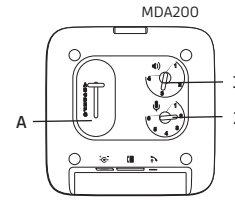
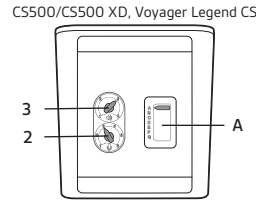
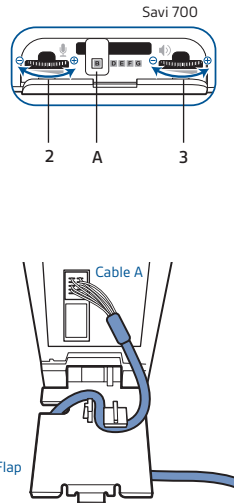
EHS Setup Use the EHS setup below to automatically answer a desk phone call by pressing a button on your Savi 700 Series, CS500/CS500 XD Series or Voyager Legend CS headset or MDA200.

NEC models: DSX 34B BL, DSX 34B FDX, DTR series, DTH series, DTL series, DT 330, DT 730 and DT 750

Setup



Configuration



Install the ringer detect device on the phone over the speaker, under the handset. This is then plugged into the socket mounted midway along the audio cable. Supports only DT700/300 Series. Please contact NEC for more information.

⚠ Note: Disconnect the phone from the network cable prior to installing the EHS cable. Insert cable "A" per diagram, and install the plastic flap included with the APN-91 cable, per the diagram prior to reconnecting the network connection. Please wait 20-30 seconds after all connections are made before pressing the headset button to make a call. Please contact NEC for more information.

**The NEC DT Series phones come in 2 versions, the std SIP (used with NEC product SIP@NET and 3C) and the i-SIP/N-SIP versions which are used with the SV8100, SV8300 and SV8500. The APN-91 only works with the i-SIP/N-SIP versions of the DT700 terminals.*

For phone set-up, please refer to your specific phone manufacturers instructions.

Electronic Hook Switch for Polycom®

Polycom



Desk Phone Models

- SoundPoint® IP 320
- SoundPoint IP 321
- SoundPoint IP 330
- SoundPoint IP 331
- SoundPoint IP 335
- SoundPoint IP 430
- SoundPoint IP 450
- SoundPoint IP 550
- SoundPoint IP 560
- SoundPoint IP 650
- SoundPoint IP 670
- VVX300 VVX500
- VVX310 VVX600
- VVX400 VVX1500
- VVX410

EHS Cable



APP-51*
PN: 38439-11

** APP-51 replaces APP-50*

Plantronics Audio Solutions



Savi 700 Series
Wireless headset system manages PC, mobile and desk phone calls



CS500/CS500 XD Series
Wireless headsets manage desk phone calls



MDA200
Enables USB connectivity to the desk phone to manage both PC and desk phone calls

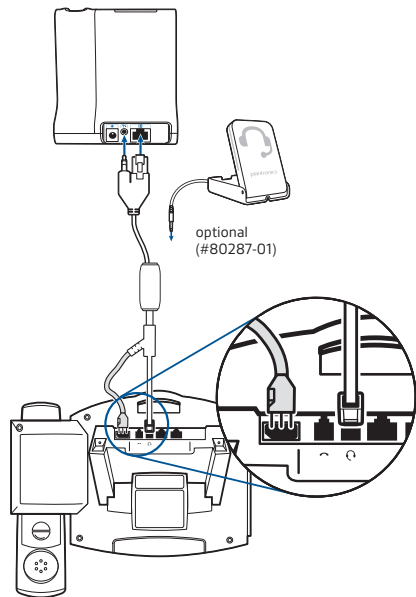


Voyager Legend CS
Wireless Bluetooth headset system manages desk phone and mobile calls

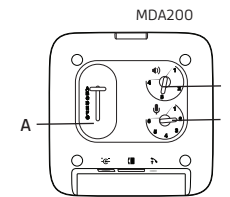
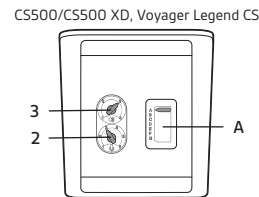
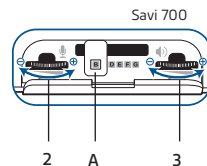
EHS Setup Use the EHS setup below to automatically answer a desk phone call by pressing a button on your Savi 700 Series, CS500/CS500 XD Series or Voyager Legend CS headset or MDA200.

Polycom models: SoundPoint IP 320, 321, 330, 331, 335, 430, 450, 550, 560, 650, 670, VVX300, VVX310, VVX400, VVX410, VVX500, VVX600, VVX1500

Setup






Configuration



Notes:

- 1) To configure the phone for EHS, navigate to: **Menu>Settings>Basic>Preferences>Headset>Analog Headset** then select **Plantronics Mode**.
- 2) IP320/321 and IP330/331 require Polycom 2.5mm adapter 2200-11095-002.

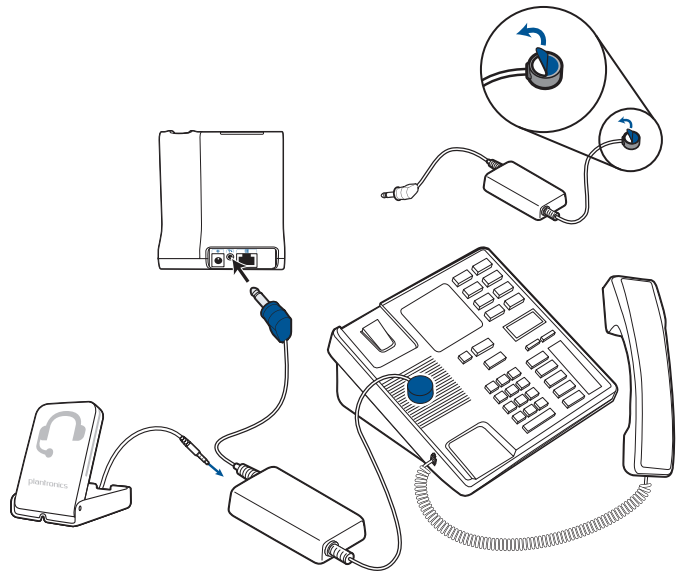
Electronic Hook Switch for ShoreTel®

<p>ShoreTel</p>  <p>Desk Phone Models</p> <table border="0"> <tr> <td>IP212K</td> <td>IP480G</td> <td>IP565 (g)</td> </tr> <tr> <td>IP230</td> <td>IP485G</td> <td>IP655*</td> </tr> <tr> <td>IP265</td> <td>IP560</td> <td></td> </tr> <tr> <td>IP480</td> <td>IP560 (g)</td> <td></td> </tr> </table>	IP212K	IP480G	IP565 (g)	IP230	IP485G	IP655*	IP265	IP560		IP480	IP560 (g)		<p>EHS Cable</p>  <p>RD-1 PN: 78887-01</p> <p><i>* IP 655 uses APD-80 with ShoreTel software version 14 and above</i></p>	<p>Plantronics Audio Solutions</p> <table border="0"> <tr> <td data-bbox="955 324 1144 519">  <p>Savi 700 Series Wireless headset system manages PC, mobile and desk phone calls</p> </td> <td data-bbox="1249 324 1417 519">  <p>CS500/CS500 XD Series Wireless headsets manage desk phone calls</p> </td> <td data-bbox="1480 349 1690 519">  <p>MDA200 Enables USB connectivity to the desk phone to manage both PC and desk phone calls</p> </td> <td data-bbox="1774 316 1942 519">  <p>Voyager Legend CS Wireless Bluetooth headset system manages desk phone and mobile calls</p> </td> </tr> </table>	 <p>Savi 700 Series Wireless headset system manages PC, mobile and desk phone calls</p>	 <p>CS500/CS500 XD Series Wireless headsets manage desk phone calls</p>	 <p>MDA200 Enables USB connectivity to the desk phone to manage both PC and desk phone calls</p>	 <p>Voyager Legend CS Wireless Bluetooth headset system manages desk phone and mobile calls</p>
IP212K	IP480G	IP565 (g)																
IP230	IP485G	IP655*																
IP265	IP560																	
IP480	IP560 (g)																	
 <p>Savi 700 Series Wireless headset system manages PC, mobile and desk phone calls</p>	 <p>CS500/CS500 XD Series Wireless headsets manage desk phone calls</p>	 <p>MDA200 Enables USB connectivity to the desk phone to manage both PC and desk phone calls</p>	 <p>Voyager Legend CS Wireless Bluetooth headset system manages desk phone and mobile calls</p>															

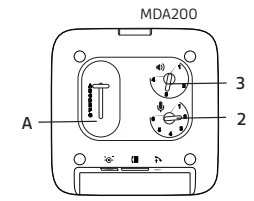
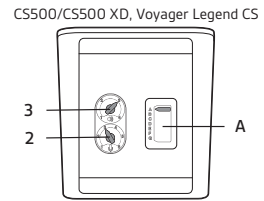
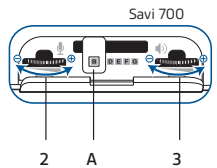
EHS Setup Use the EHS setup below to automatically answer a desk phone call by pressing a button on your Savi 700 Series, CS500/CS500 XD Series or Voyager Legend CS headset or MDA200.

ShoreTel models: IP 212K, 230, 265, 480, 480G, 485G, 560, 560G, 565G, 655

Setup



Configuration



Electronic Hook Switch for Unify

Unify



Desk Phone Models

Optipoint 410	OpenStage 30
Optipoint 420	OpenStage 40
Optipoint 500	OpenStage 60
Optipoint 600	OpenStage 80
OpenScape 35G	
OpenScape 55G	

EHS Cable



APS-11*
PN: 37818-11

* APS-11 replaces APS-10

Plantronics Audio Solutions



Savi 700 Series
Wireless headset system manages PC, mobile and desk phone calls



CS500/CS500 XD Series
Wireless headsets manage desk phone calls



MDA200
Enables USB connectivity to the desk phone to manage both PC and desk phone calls

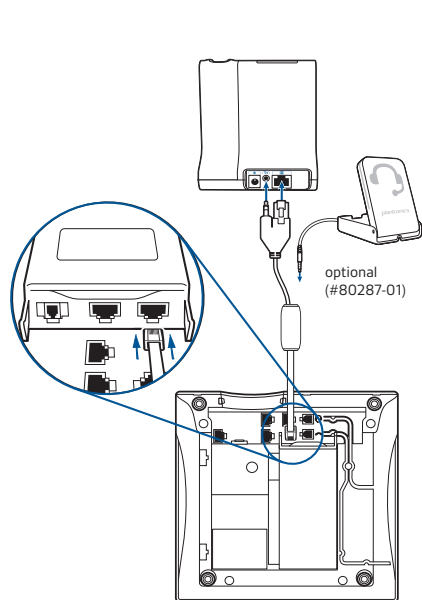


Voyager Legend CS
Wireless Bluetooth headset system manages desk phone and mobile calls

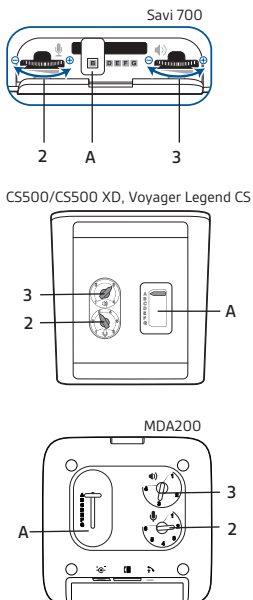
EHS Setup Use the EHS setup below to automatically answer a desk phone call by pressing a button on your Savi 700 Series, CS500/CS500 XD Series or Voyager Legend CS headset or MDA200.

Unify models: Optipoint 410, 420, 500, 600

Setup

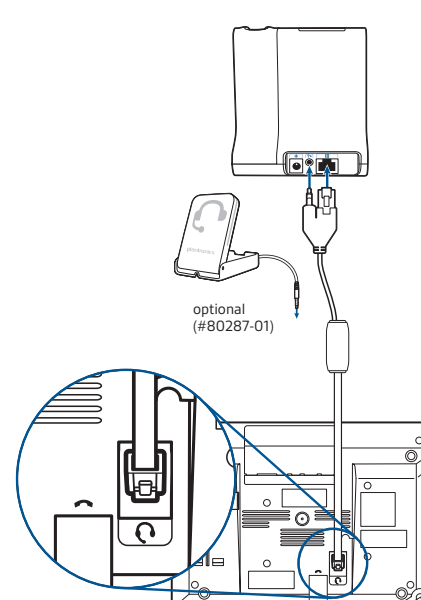


Configuration

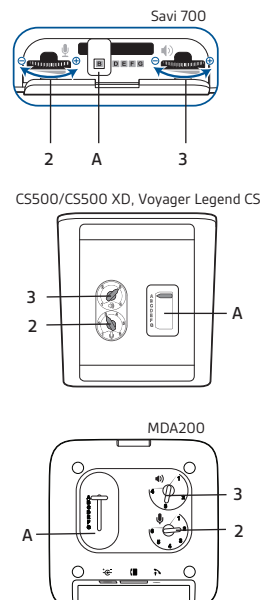


Unify models: OpenStage 30, 35G, 40, 55G, 60, 80

Setup



Configuration



Electronic Hook Switch for Toshiba®

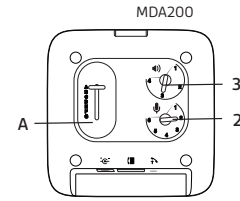
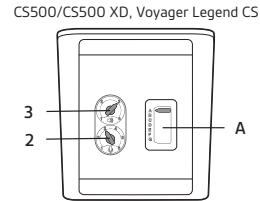
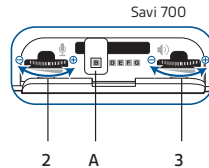
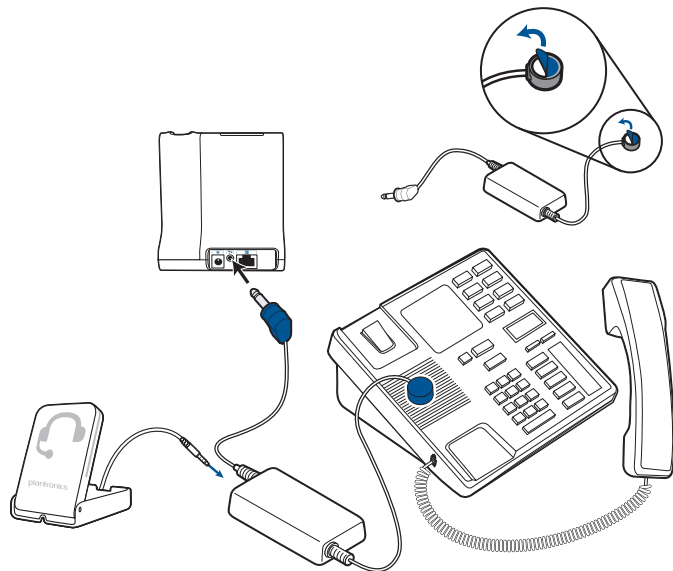
<p>Toshiba</p>  <p>Desk Phone Models DP 5118-DP IPT 2008-SDL DP 5130-SDL IPT 2010-SD DP 5X22-SD IPT 2020-SD DP 5X32-SD</p>	<p>EHS Cable</p>  <p>RD-1 PN: 78887-01</p>	<p>Plantronics Audio Solutions</p> <table border="0"> <tr> <td data-bbox="961 329 1129 516">  <p>Savi 700 Series Wireless headset system manages PC, mobile and desk phone calls</p> </td> <td data-bbox="1251 329 1398 516">  <p>CS500/CS500 XD Series Wireless headsets manage desk phone calls</p> </td> <td data-bbox="1482 354 1692 516">  <p>MDA200 Enables USB connectivity to the desk phone to manage both PC and desk phone calls</p> </td> <td data-bbox="1780 313 1938 516">  <p>Voyager Legend CS Wireless Bluetooth headset system manages desk phone and mobile calls</p> </td> </tr> </table>				 <p>Savi 700 Series Wireless headset system manages PC, mobile and desk phone calls</p>	 <p>CS500/CS500 XD Series Wireless headsets manage desk phone calls</p>	 <p>MDA200 Enables USB connectivity to the desk phone to manage both PC and desk phone calls</p>	 <p>Voyager Legend CS Wireless Bluetooth headset system manages desk phone and mobile calls</p>
 <p>Savi 700 Series Wireless headset system manages PC, mobile and desk phone calls</p>	 <p>CS500/CS500 XD Series Wireless headsets manage desk phone calls</p>	 <p>MDA200 Enables USB connectivity to the desk phone to manage both PC and desk phone calls</p>	 <p>Voyager Legend CS Wireless Bluetooth headset system manages desk phone and mobile calls</p>						

EHS Setup Use the EHS setup below to automatically answer a desk phone call by pressing a button on your Savi 700 Series, CS500/CS500 XD Series or Voyager Legend CS headset or MDA200.

Toshiba models: DP 051180-DP, DP 5130-SDL, DP 5X22-SD, DP-5X32, IPT 2008-SDL, IPT 2010-SDL, IPT 2020-SD

Setup

Configuration



plantronics®

Plantronics
345 Encinal Street
Santa Cruz, CA 95060

plantronics.com

©2014 Plantronics, Inc. All rights reserved. Plantronics, CS500 Series, MDA200, Voyager Legend, Savi, and the Sound World graphic are trademarks or registered trademarks of Plantronics, Inc. All other trade names and trademarks are the property of their respective owners. 02.14