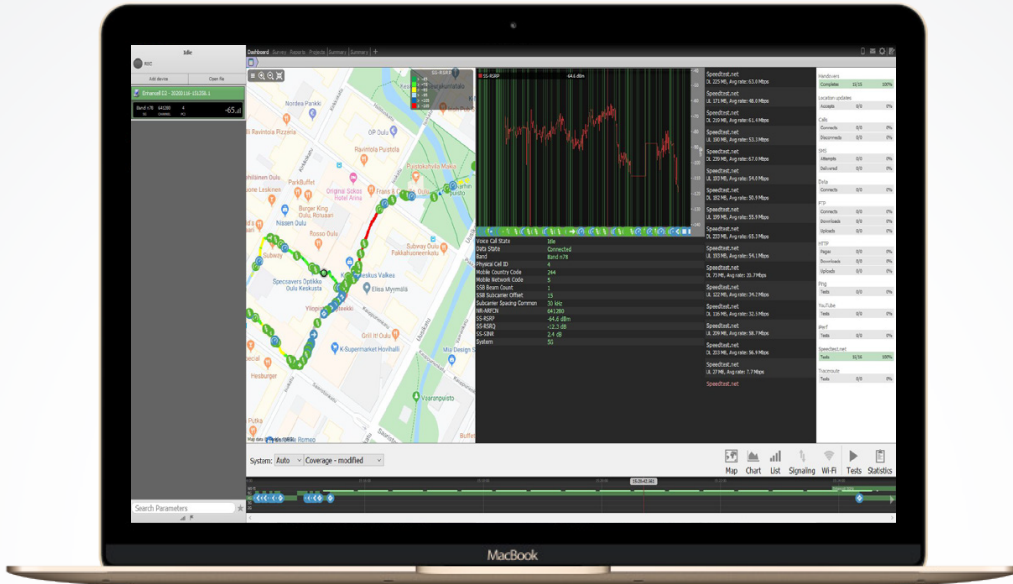




ADVANCED MOBILE NETWORK MEASUREMENT SOLUTION



AIRSCOUT® MOBILITY STUDIO:

AirScout Mobility Studio is a measurement playback and analyzing tool which offers quick and easy way to produce reports and visualizations of the measurement test results. Synchronization to Cloud enables instantaneous report production of measurements performed with other AirScout Mobility devices.

AirScout Mobility Studio is a software-only product, and its licensing is delivered via our AirScout Cloud service. This cloud-based solution is completely independent of physical production chains. Thus, the deliveries and manufacturing capabilities are stable, swift, and flexible.

FULL 5G SUPPORT

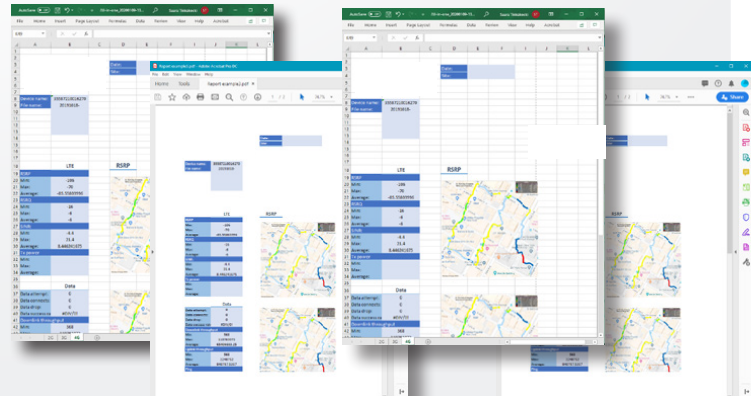
AirScout Mobility Studio 3.2 supports measurement for a wide range of 5G parameters ensuring the full advantages of 5G measurement for the users. 4G licenses are upgradeable to 5G making it convenient and cost-effective for existing customers.

TECHNOLOGIES

AirScout Mobility Studio runs on Windows, Linux and macOS. AirScout Mobility Studio supports playback and analysis for technologies including GSM, CDMA, EVDO, WCDMA, HSDPA, HSUPA, HSPA+, LTE/LTE-A, 5G, Wi-Fi and Bluetooth.

UNPARALLELED FLEXIBILITY ON LICENSE:

AirScout Mobility offers unparalleled flexibility and cost-effectiveness with licenses: all technology functions are included by default and the license transfer is standard from desktop device to another. AirScout Mobility's cloud-based licensing guarantees the user full control over license transfers, and a real-time view of license usage. To add to the flexibility, both perpetual and rental licenses are available.





AIRSCOUT MOBILITY STUDIO

INDOOR AND OUTDOOR MAPS:

AirScout Mobility Studio includes support for indoor and outdoor mapping and an offline mode map data caching for outdoor maps. AirScout Mobility Studio supports digital images and photos of the floor plan taken with the device as indoor maps. Indoor floor plans include markers and geodetic coordinates (support e.g. for iBwave format). This enables geocoding indoor floor plans on top of Google Maps.

AirScout Mobility Studio supports Google Maps, OpenStreetMap and ÖPNVKarte as outdoor maps. The positioning of a measurement is based on the AirScout Mobility device's GPS location. The drive route can be visualized on a map as color-coded parameter values.



KEY FEATURES:

- Supports Windows, Mac, and Linux operating systems
- Advanced playback and troubleshooting capabilities
- Supports GSM, CDMA, EVDO, WCDMA, HSDPA, HSUPA, HSPA+, LTE/LTE-A, 5G, Wi-Fi and Bluetooth measurement
- Transferrable license allows you to move your software from one laptop to another with ease
- Support for AirScout Mobility Cloud
- Settings configuration from Cloud
- License management
- Automatic log file transfer to Cloud
- Test and Script synchronization with Cloud
- Indoor map synchronization with Cloud
- Signaling decoder for L3 and RCC signaling messages. Supports the following view types: line, bar, gauge graphs, and text views
- Layer3: updated RCC decoder for the release 15 with full support for 5G signaling decoding
- User-defined views allowing parameter display in the following view types: line, bar, and text views
- Support for indoor and outdoor mapping. Including offline mode map data caching for outdoor maps
- Indoor floor plans with markers and geodetic coordinates (support e.g. for iBwave format). Enables geocoding indoor floor plans on top of Google Maps
- Instant Report after data collection allowing easy sharing of report in PDF format
- Fully customized reports built on top of Excel sheet to ensure endless options in report layout and reproduction.
- Fully customized Key Performance Indicators (KPIs) in report production
- Unique Quick Plot feature for easy measurement data plotting



1390 Aspen Way Vista, CA • 92081

TC-ASM-STU 03/21

Latin America Phone : 1.760.510.0558 | EMEA Phone: +44 (0) 1633 927 050
©2021 Tempo Communications Inc. • An ISO 9001 Company • Printed in USA

EMEA Address: Tempo Europe Limited • Brecon House
William Brown Close • Cwmbran • NP44 3AB • UK

TempoCom.com | tel 800.642.2155 | sales@tempocom.com



TEMPO
COMMUNICATIONS



Follow Us
[@TEMPOCOMMS](https://twitter.com/TEMPOCOMMS)