

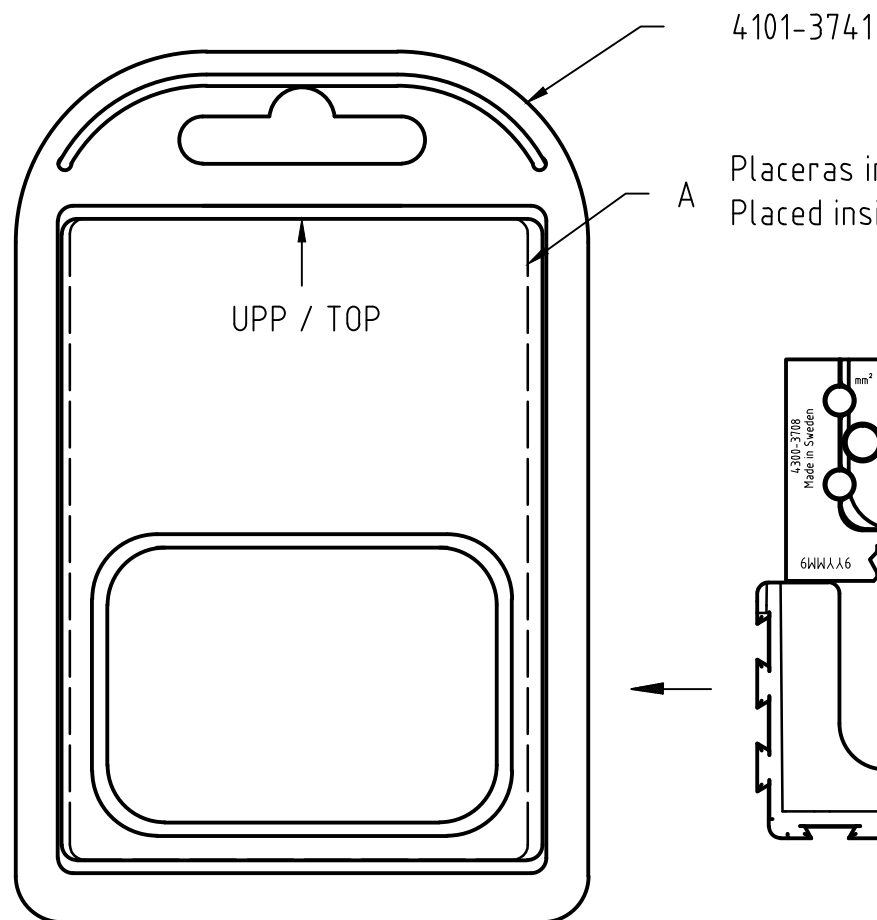
För icke direkt toleranssatta mått gäller toleransklass
 General tolerances if not otherwise stated

NOM DIM MM		TOL CLASS		
From	To	A	B	C
(1)	6	±0.05	±0.1	±0.2
(6)	30	±0.1	±0.2	±0.5
(30)	100	±0.15	±0.3	±0.8
(100)	300	±0.2	±0.5	±1.2
(300)	1000	±0.3	±0.8	±2

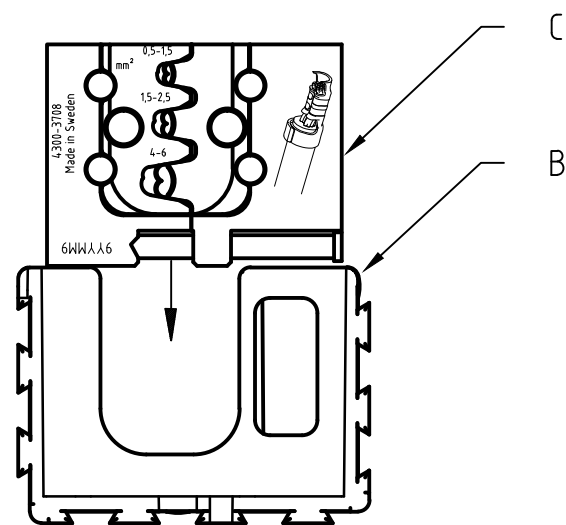
Hål / Holes H13

Skarpa kanter brutna där ej annat anges.
 No sharp edges unless otherwise specified.

Övriga generella toleranser enligt ritning 4100-4644.
 Additional general tolerances in accordance with drawing 4100-4644.



Placeras inuti vikblisetret /
 Placed inside the clamshell



Pressback kompl. placeras i
 hållaren vid packning/
 Die Compl. placed in
 holder when packaging

Pressback kompl. placeras i
 hållaren vid packning/
 Die Compl. placed in
 holder when packaging

Packas i 10-packlåda E med etikett/kort D

4300-3708/AAB	4101-6640 E	4101-3490	4300-3708	-	-
4300-3708			4101-6167		
ART.NR.VAR.	A	B	C	D	E

Material		Behandling/Treatment			Status Prel.utc.	
Konstr./Design OS	Ritad/Drawn MANO	Datum/Date 2009-10-19	Skala/Scale 1:1	Kontr./Checked IP	Godk./Approved NE	Anne/Blank
pressmaster ®				Benämning/Denomination PRESSBACK		Vikt/Weight,gran Art grp 011
ISO 9001 REG NR FM13687				DIE SET		Ritn nr/Drawing no 43003708 REV