

**F1-8102SS & F1-8200A**

## FEATURES

- EIA / TIA specifications
- Low insertion loss
- Compact and lightweight
- Easy installation on panels
- Perfect durability
- Precision alignment straight split sleeves

## APPLICATIONS

- Telecommunications
- Local area network
- Fiber optic instruments
- Testing optical devices

## SPECIFICATIONS

### Optical Characteristics- ST DD-Shape PC

	Singlemode	Multimode (Bronze)
Typical Insertion Loss	.07	.15

### Mechanical Characteristics

Insertion Loss variation after 500 connections	< 0.10dB	
Corrosion resistant body		

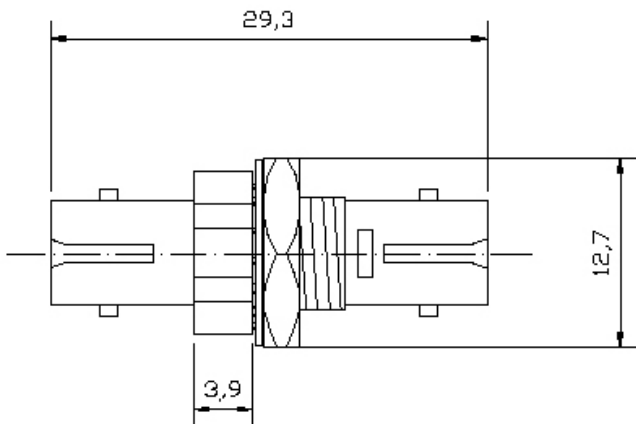
### Materials

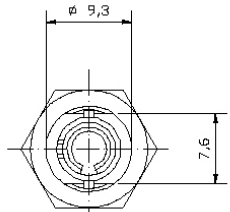
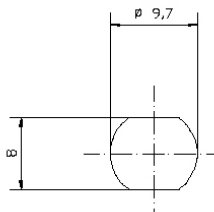
Dust cap	Vinyl
Body	Nickel Plated Brass
Sleeve	Zirconia or Phosphor Bronze
Hexagonal Nut	Nickel Plated Brass
Washer	Nickel Plated Brass

### Environmental

Operating Temperature (°C)	.Min -20° Typ. +25° Max +60
----------------------------	-----------------------------

## TECH DRAWING



Model	Flange	Recommended Panel Hole
ST Standard		

This following drawing shows the dimensions recommended for the panel hole.