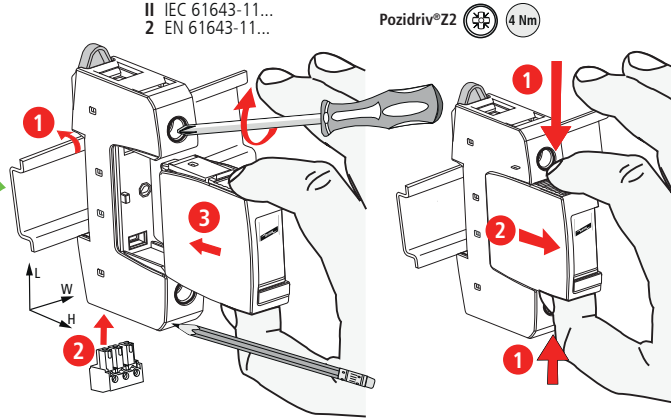
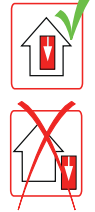




DEHNguard S® DG S...VA (FM)

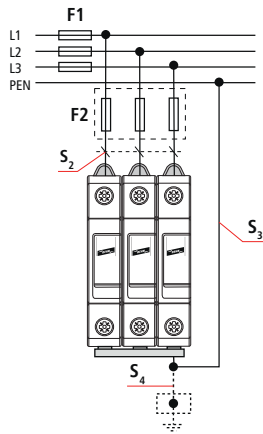
- DE Einbauanleitung
- GB Installation instructions
- IT Istruzioni di montaggio
- FR Instructions de montage
- NL Montagehandleiding
- ES Instrucciones de montaje
- PT Instruções de montagem
- DK Monteringsvejledning
- SE Monteringsanvisning
- FI Asennusohje
- GR Οδηγίες συναρμολόγησης
- PL Instrukcja montażu
- CZ Montážní návod
- TR Kurulum Talimatları
- RU Инструкция по монтажу
- CN 安装说明
- HU Szerelési útmutató
- JP 設置説明書



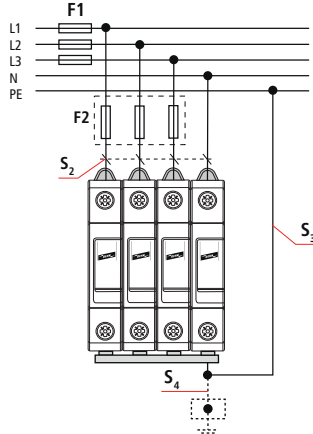
	DG S 75 VA (FM)	DG S 275 VA (FM)	DG S 385 VA (FM)
$U_N$	60 V	230 V	230 V
$U_{c,AC}$	75 V~	275 V~	385 V~
$f_N$	50 / 60 Hz		
max. $\Rightarrow$	100 A gG		
$I_{max}$	20 kA (8/20 $\mu$ s)		
$I_{sCCR}$	25 kA <sub>ms</sub>		
$\vartheta^\circ$	-40°C ... + 80°C		
$\varphi$	5% ... 95%		
$I_{PE}$	$\leq 5 \mu$ A		
1) IP	20		
L x W x H	90 mm x 18 mm x 73 mm		
$U_{c,DC}$	100 V-	350 V-	500 V-
max. $\Rightarrow$	80 A gG	80 A gG	80 A gPV
$I_{sCCR}$	5000 A-		

	12 mm	12 mm	12 mm
min. $\square$ L, N, $\downarrow$	1.5 mm <sup>2</sup>		
max. $\square$ L, N, $\downarrow$	25 mm <sup>2</sup>	35 mm <sup>2</sup>	
$\square$ $\triangle$	16 mm <sup>2</sup> Cu	$\geq 15.5$ mm	

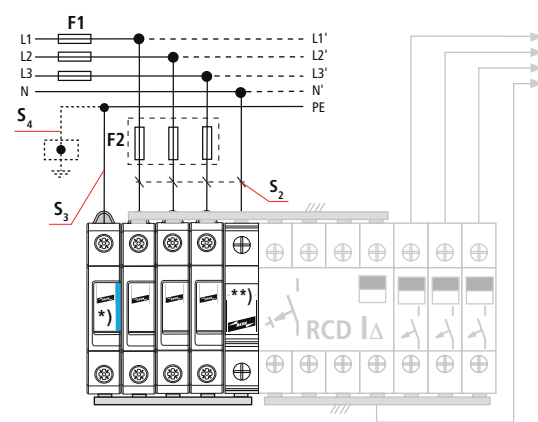
TN-C



TN (-C) -S



TT 3+1



\*) DEHNgap C S  
DGP C S (FM)  
952 030 (952 035)

\*\*) DK 25  
952 699



DEHNguard® DG S ...VA (FM)		DG S ... (FM)			
Fuse F1 A gG	F1 > 100 A gG ↓ F2 ≤ 100 A gG ↓ F1 ≤ 100 A gG	S <sub>2</sub> / mm <sup>2</sup>	S <sub>3</sub> / mm <sup>2</sup>	S <sub>4</sub> / mm <sup>2</sup>	Fuse F2 A gG
25	↓	4	6	6	---
35	↓	4	6	6	---
40	↓	4	6	6	---
50	↓	6	6	6	---
63	↓	10	10	10	---
80	↓	10	10	10	---
100	↓	16	16	16	---
>100	↓	16	16	16	100

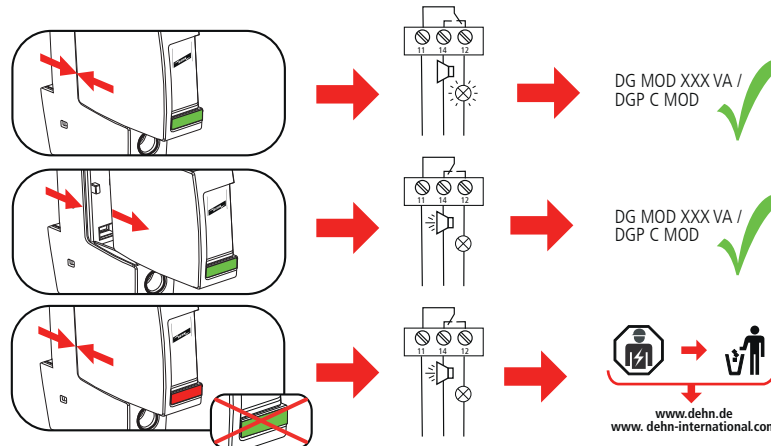
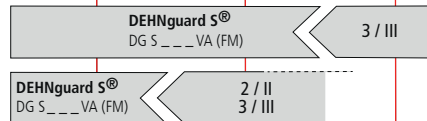
LPZ 0<sub>B</sub>

LPZ 0<sub>B</sub>

LPZ 1

LPZ 2

LPZ 3



DEHNguard S DG S...VA FM / DEHNgap C S DGP C S FM	
$U_N / I_N$	AC: 250 V / 0,5 A
	DC: 250 V / 0,1 A 125 V / 0,2 A 75 V / 0,5 A
max. 1,5 mm <sup>2</sup>	

