

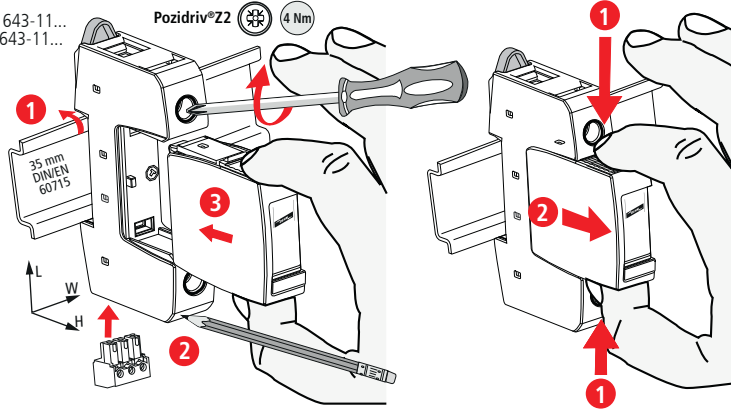


DEHNguard® S CI DG S CI 275 (FM)

- DE Einbauanleitung
- GB Installation instructions
- IT Istruzioni di montaggio
- FR Instructions de montage
- NL Montagehandleiding
- ES Instrucciones de montaje
- PT Instruções de montagem
- DK Monteringsvejledning
- SE Monteringsanvisning
- FI Asennusohje
- GR Οδηγίες συναρμολόγησης
- PL Instrukcja montażu
- CZ Montážní návod
- TR Kurulum Talimatları
- RU Инструкция по монтажу
- CN 安装说明
- HU Szerelési útmutató
- JP 設置説明書



II IEC 61643-11...  
2 EN 61643-11...



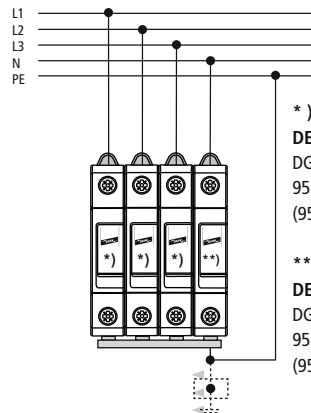
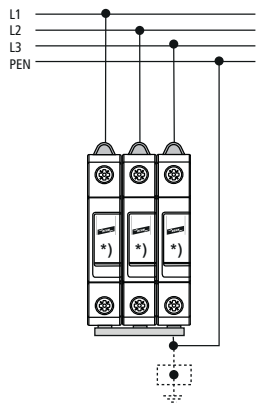
DG S CI 275 (FM)	
DG MOD CI 275	
$U_N$	230 V (50/60 Hz); Tol.: 0V ... $U_c$
$U_c$	275 V (50/60 Hz)
$I_{SCCR}$	25 kA <sub>rms</sub>
$I_{max. (8/20\mu s)}$	25 kA
$\theta^\circ$	-40°C ... + 80°C
$\varphi$	5% ... 95%
IP	< 0,4 mA
IP 1)	20
L x W x H	90 mm x 18 mm x 73 mm

	12 mm	12 mm	12 mm
min. □ L, N, PE	1,5 mm <sup>2</sup>		
max. □ L, N, PE	25 mm <sup>2</sup>	35 mm <sup>2</sup>	
□ ⚠	16 mm <sup>2</sup> Cu	≥ 15,5 mm	

TN-C

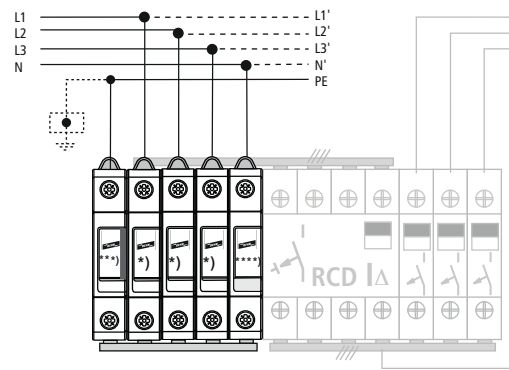
TN (-C) -S

TT 3+1



\*)  
**DEHNguard S CI**  
DG S CI 275 (FM)  
952 079 (952 099)

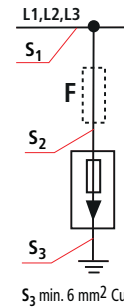
\*\*) **DEHNguard S**  
DG S 275 (FM)  
952 070 (952 090)



\*) **DEHNguard S CI**  
DG S CI 275 (FM)  
952 079 (952 099)

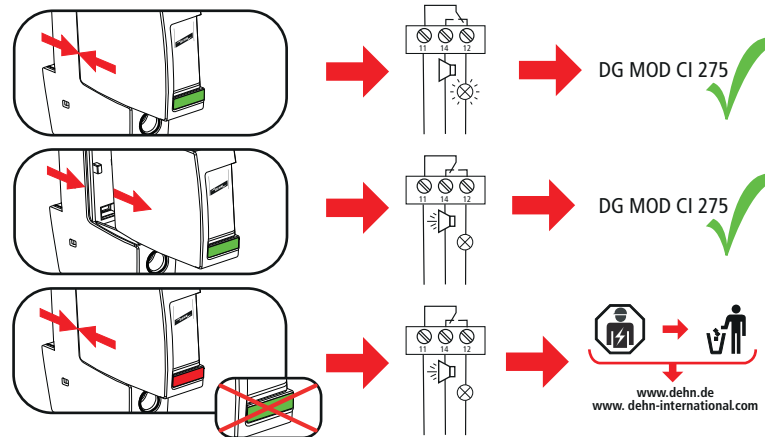
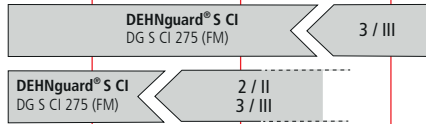
\*\*) **DEHNgap C S**  
DGP C S (FM)  
952 030 (952 035)

\*\*\*\*) DK 25  
952 699



$S_1$ / mm <sup>2</sup>	max. Ik	$S_2$ / mm <sup>2</sup>	$S_3$ / mm <sup>2</sup>	F
≤ 25 mm <sup>2</sup>	≤ 25 kA	= $S_1$	= $S_1$ min. 6 mm <sup>2</sup>	
≤ 35 mm <sup>2</sup>				
> 25 mm <sup>2</sup>	≤ 25 kA	16 mm <sup>2</sup> 2)	16 mm <sup>2</sup>	
> 35 mm <sup>2</sup>				

LPZ 0<sub>A</sub>    LPZ 0<sub>B</sub>    LPZ 1    LPZ 2    LPZ 3



DEHNguard S CI DG S CI 275 FM	
$U_N / I_N$	AC: 250 V / 0,5 A
	DC: 250 V / 0,1 A 125 V / 0,2 A 75 V / 0,5 A
max. 1,5 mm <sup>2</sup>	

