

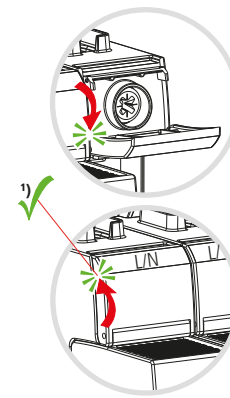
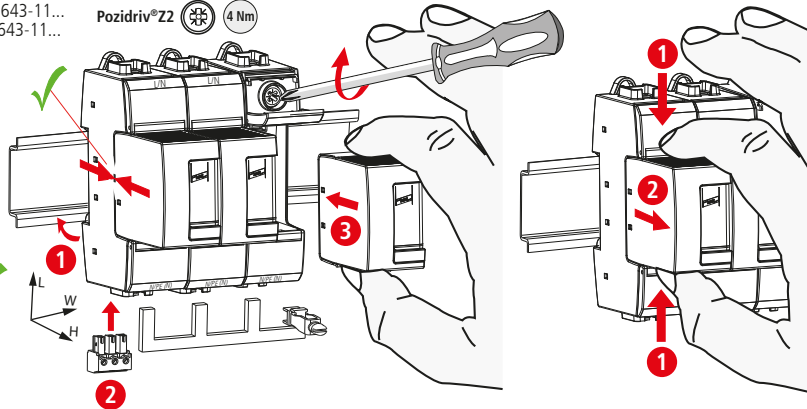
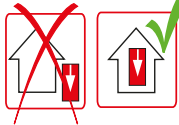
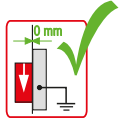


DEHNguard® DG SE H LI ... FM



II IEC 61643-11...
2 EN 61643-11...

Pozidriv®Z2 4 Nm

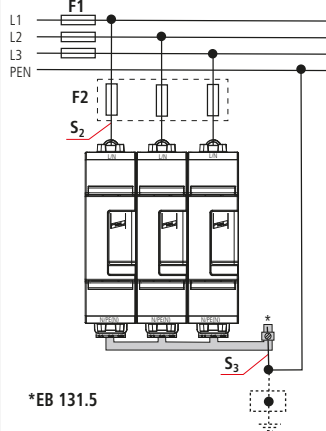


DG SE H LI...(FM)	275	320	385	440	1000
U _N / Tol.: 0V ... U _C	230 V	230 V	277 V	400 V	690 V
U _C	275 V~	320 V~	385 V~	440 V~	1000 V~
f _N	50 / 60 Hz				
max. I _{sc}	125 A gG				100 A gG
I _{max}	65 kA				40 kA
I _{SCCR}	50 kA _{rms}				25 kA _{rms}
θ°	-40°C ... + 80°C				
φ	5% ... 95%				
I _{PE}	< 1 mA				
IP 2)	20				
L x W x H	98 mm x 27 mm 85 mm				

min. □ L, N, PE	1.5 mm ²	
max. □ L, N, PE	25 mm ²	35 mm ²

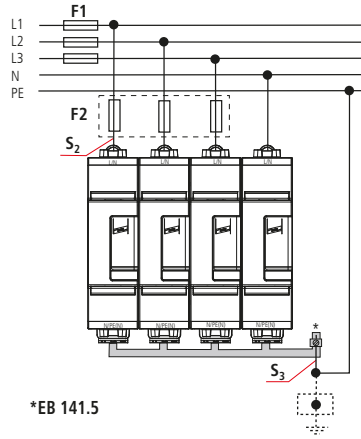
- DE Einbauanleitung
- GB Installation instructions
- IT Istruzioni di montaggio
- FR Instructions de montage
- NL Montagehandleiding
- ES Instrucciones de montaje
- PT Instruções de montagem
- DK Monteringsvejledning
- SE Monteringsanvisning
- FI Asennusohje
- GR Οδηγίες συναρμολόγησης
- PL Instrukcja montażu
- CZ Montážní návod
- TR Kurulum Talimatları
- RU Инструкция по монтажу
- CN 安装说明
- HU Szerelési útmutató
- JP 設置説明書

TN-C



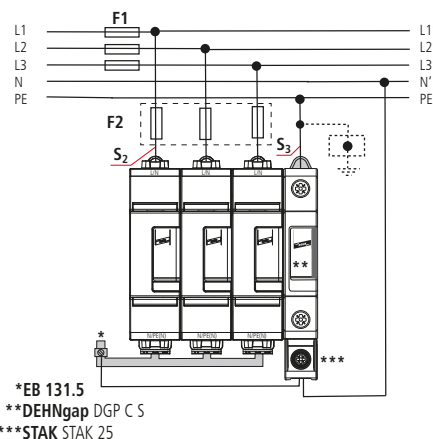
*EB 131.5

TN (-C) -S



*EB 141.5

TT 3+1 (230 / 400 V)

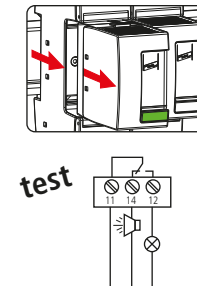
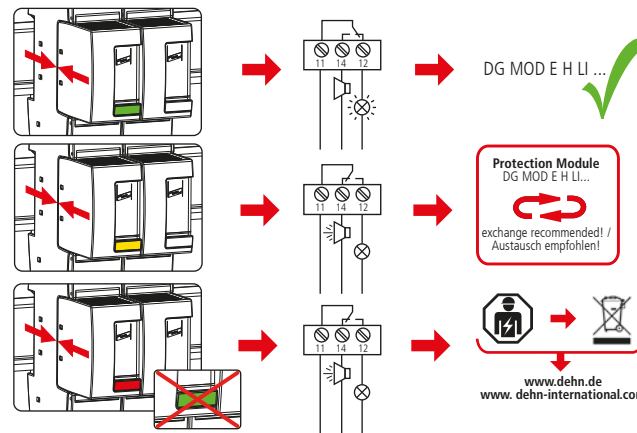
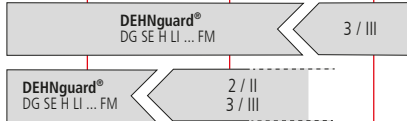


*EB 131.5
**DEHNgap DGP C S
***STAK STAK 25

	DG SE H LI 275, 320, 385, 440 FM	DG SE H LI 1000 FM
F1	F1 > 125 A gG ↓ F2 ≤ 125 A gG	F1 > 100 A gG ↓ F2 ≤ 100 A gG
F2	F1 ≤ 125 A gG ↓ F2	F1 ≤ 100 A gG ↓ F2

DG SE H LI ... FM			275, 320, 385, 440	1000
Fuse F1 A gG	S ₂ / mm ²	S ₃ / mm ²	Fuse F2 A gG	Fuse F2 A gG
25	4	6	---	---
35	4	6	---	---
40	4	6	---	---
50	6	6	---	---
63	10	10	---	---
80	10	10	---	---
100	16	16	---	---
125	16	16	---	100
>125	16	16	125	100

LPZ 0_A | LPZ 0_B | LPZ 1 | LPZ 2 | LPZ 3



DEHNguard® DG SE H LI ... FM	
U _N / I _N	AC: 250 V / 0.5 A
	DC: 250 V / 0.1 A 125 V / 0.2 A 75 V / 0.5 A
max. 1.5 mm ²	

