

DEHNguard®modular DG M YPV 1200 / 1500 FM

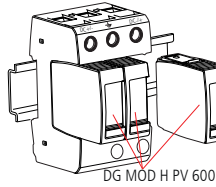
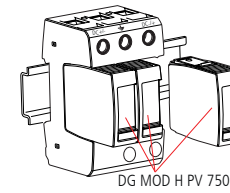
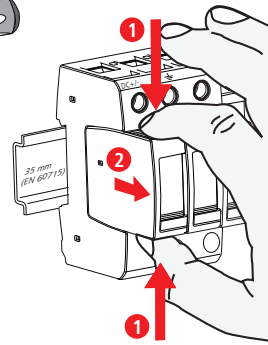
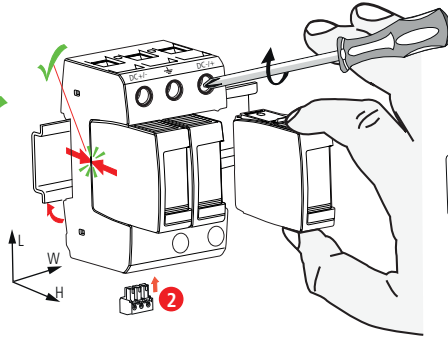
DG M YPV 1200 FM DG M YPV 1500 FM

- DE Einbauanleitung
- GB Installation instructions
- IT Istruzioni di montaggio
- FR Instructions de montage
- NL Montagehandleiding
- ES Instrucciones de montaje
- PT Instruções de montagem
- DK Monteringsvejledning
- SE Monteringsanvisning
- FI Asennusohje
- GR Οδηγίες συναρμολόγησης
- PL Instrukcja montażu
- CZ Montážní návod
- TR Kurulum Talimatları
- RU Инструкция по монтажу
- CN 安装说明
- HU Szerelési útmutató
- JP 設置説明書



2 EN 50539-11...

Pozidriv®Z2 4 Nm

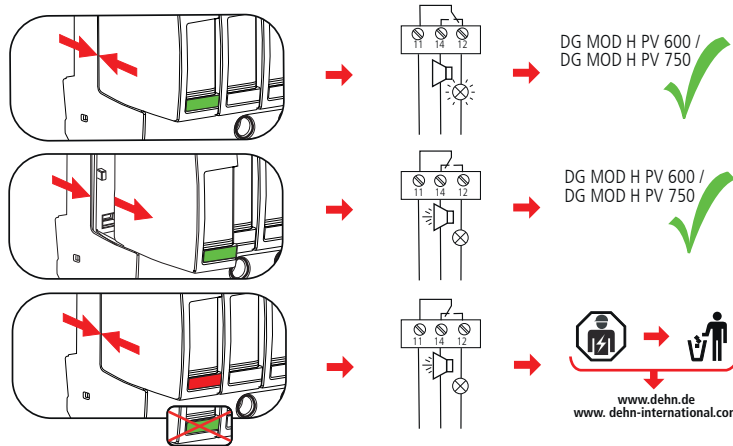
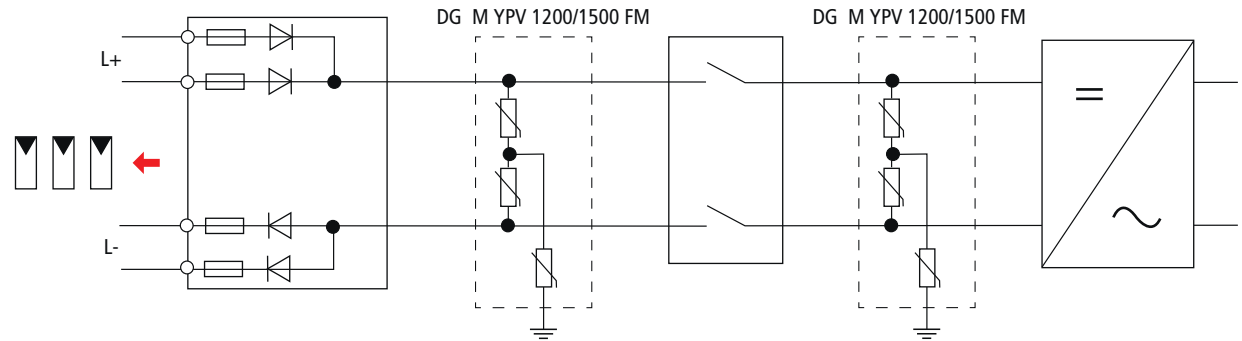
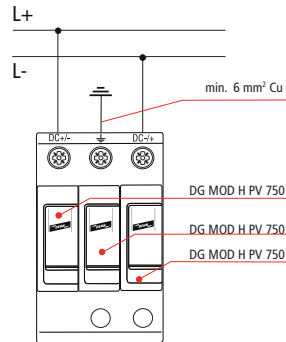
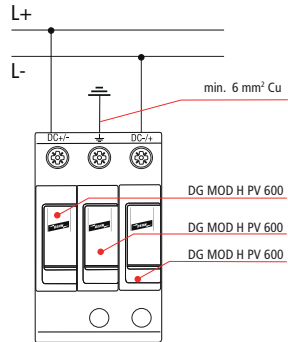


	DG M YPV 1200 FM DG MOD H PV 600	DG M YPV 1500 FM DG MOD H PV 750
U <sub>cpv</sub>	1170 V	1500 V
I <sub>total</sub>	40 kA	40 kA
I <sub>max</sub>		40 kA
I <sub>scpv</sub>		10 kA
I <sub>n</sub>	20 kA	15 kA
U <sub>p</sub>	4 kV	5 kV
I <sub>pe</sub> AC	600 µA	
I <sub>pe</sub> DC	50 µA	
θ <sup>a</sup>	-40°C ... + 80°C	
φ	5% ... 95%	
1) IP	20	
failure behavior/ Ausfallverhalten	open circuit / Abtrennung	
L x W x H	90 mm x 54 mm x 73 mm	

min. □ DC+/-, DC+/, ±	1.5 mm <sup>2</sup>
max. □ DC+/-, DC+/, ±	25 mm <sup>2</sup> 35 mm <sup>2</sup>
□ ▲	16 mm <sup>2</sup> Cu  ≥15.5 mm

2) DG M YPV 1200 FM

2) DG M YPV 1500 FM



www.dehn.de  
www.dehn-international.com

DEHNguard®modular DG M YPV 1200 FM,  
DG M YPV 1500 FM

U <sub>N</sub> / I <sub>N</sub>	AC: 250 V / 0.5 A
0.2 Nm	DC: 250 V / 0.1 A 125 V / 0.2 A 75 V / 0.5 A
max. 1.5 mm <sup>2</sup>	

