



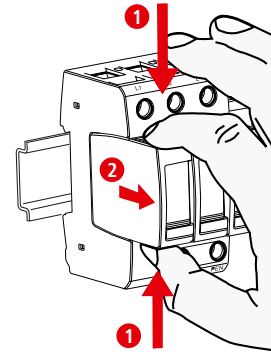
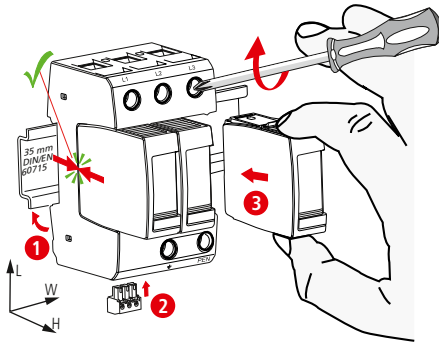
## DEHNguard® modular DG M WE 600 (FM)

- DE Einbauanleitung
- GB Installation instructions
- IT Istruzioni di montaggio
- FR Instructions de montage
- NL Montagehandleiding
- ES Instrucciones de montaje
- PT Instruções de montagem
- DK Monteringsvejledning
- SE Monteringsanvisning
- FI Asennusohje
- GR Οδηγίες συναρμολόγησης
- PL Instrukcja montażu
- CZ Montážní návod
- TR Kurulum Talimatları
- RU Инструкция по монтажу
- CN 安装说明
- HU Szerelési útmutató
- JP 設置説明書



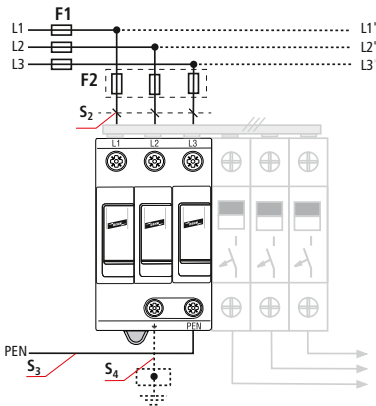
II IEC 61643-11...  
2 EN 61643-11...

Pozidriv®Z2 (4 Nm)



	DG M WE 600 (FM)
	DG MOD 750
$U_N / \text{Tol.} : 0V \dots U_C$	480 V
$U_C$	600 V
$U_{\text{mov}}$	750 V
$f_N$	50/60 Hz
max.	100 A gG
$I_{\text{SCCR}}$	25 kA <sub>rms</sub>
$I_{\text{max}}$	25 kA
$\vartheta^\circ$	-40°C ... +80°C
$\Phi$	5% ... 95%
$I_{\text{PE}}$	< 0.1 mA
IP	20
L x W x H	90 mm x 54 mm x 73 mm

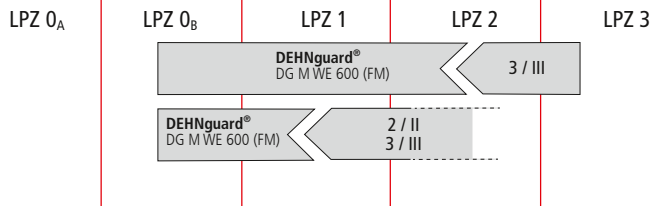
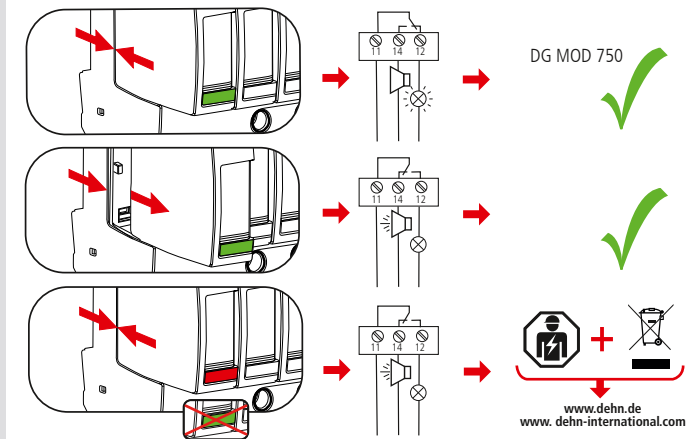
### TNC



DEHNguard®modular DG M WE 600 (FM),		DEHNguard®modular DG M WE 600 (FM),				
F1	F2	F1 A gG	S <sub>2</sub> / mm <sup>2</sup>	S <sub>3</sub> / mm <sup>2</sup>	S <sub>4</sub> / mm <sup>2</sup>	F2 A gG
$F1 \leq 100 \text{ A gG}$ 	<del><math>F2</math></del>	25	2.5	6	6	---
		35	4	6	6	---
$F1 > 100 \text{ A gG}$ 	$F2 \leq 100 \text{ A gG}$	40	4	6	6	---
		50	6	6	6	---
		63	10	10	10	---
		80	10	10	10	---
		100	16	16	16	---
> 100	16	16	16	100		

min. $\square$ L, N, PEN,			
			1.5 mm <sup>2</sup>
max. $\square$ L, N, PEN,	25 mm <sup>2</sup>	35 mm <sup>2</sup>	
$\square$	16 mm <sup>2</sup> Cu	$\geq 15.5 \text{ mm}$	

### Fault indication / Defektanzeige



DEHNguard®modular DG M WE 600 FM	
	$U_N / I_N$
	AC: 250 V / 0.5 A
	DC: 250 V / 0.1 A
	125 V / 0.2 A
	75 V / 0.5 A
	0.2 Nm
	max. 1.5 mm <sup>2</sup>

