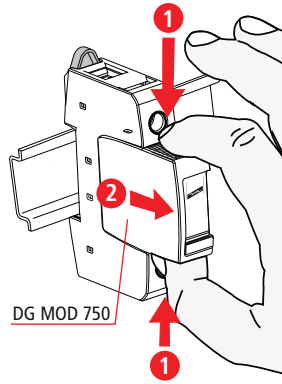
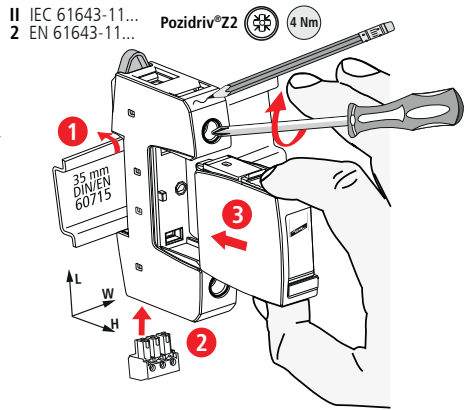




DEHNguard® modular DG S WE 600 (FM)

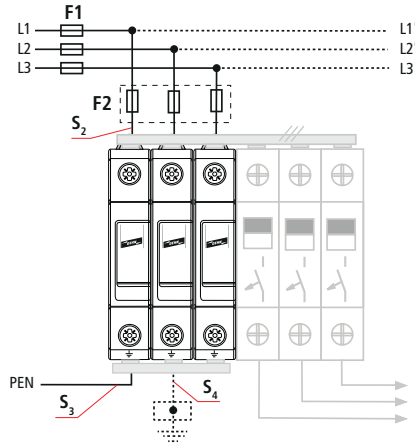
- DE Einbauanleitung
- GB Installation instructions
- IT Istruzioni di montaggio
- FR Instructions de montage
- NL Montagehandleiding
- ES Instrucciones de montaje
- PT Instruções de montagem
- DK Monteringsvejledning
- SE Monteringsanvisning
- FI Asennusohje
- GR Οδηγίες συναρμολόγησης
- PL Instrukcja montażu
- CZ Montážní návod
- TR Kurulum Talimatları
- RU Инструкция по монтажу
- CN 安装说明
- HU Szerelési útmutató
- JP 設置説明書



DG S WE 600 (FM)	
	DG MOD 750
U_N	480 V (50/60 Hz) Tol.: 0V ... U_C
U_C	600 V (50/60 Hz)
U_{mov}	750 V (50/60 Hz)
max.	100 A gG
I_{max}	25 kA
I_{SCCR}	25 kArms
θ°	-40°C ... +80°C
Φ	5% ... 95%
I_{PE}	< 0,3 mA
IP *)	20
L x W x H	90 mm x 18 mm x 73 mm

	12 mm	12 mm	12 mm
min. \square L, N, \perp	1,5 mm ²		
max. \square L, N, \perp	25 mm ²	35 mm ²	
\square	16 mm ² Cu		$\geq 15,5$ mm

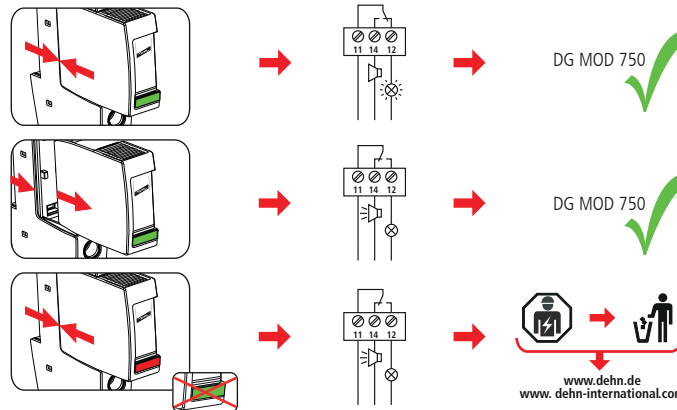
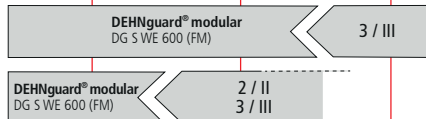
TNC



DEHNguard® modular DG S WE 600 (FM)	
F1	F1 ≤ 100 A gG ↓ F2
F2	F1 > 100 A gG ↓ F2 ≤ 100 A gG

DEHNguard® modular DG S WE 600 (FM)				
F1 A gG	S_2 / mm ²	S_3 / mm ²	S_4 / mm ²	F2 A gG
25	4	6	6	---
35	4	6	6	---
40	4	6	6	---
50	6	6	6	---
63	10	10	10	---
80	10	10	10	---
100	16	16	16	---
>100	16	16	16	100

LPZ 0_A LPZ 0_B LPZ 1 LPZ 2 LPZ 3



DEHNguard® modular DG S WE 600 (FM)	
	AC: 250 V / 0.5 A
	DC: 250 V / 0.1 A 125 V / 0.2 A 75 V / 0.5 A
	max. 1.5 mm ²

