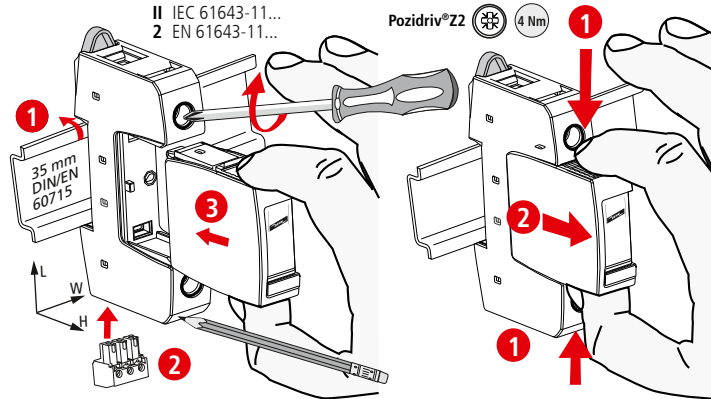


DEHNguard® S DG S ... (FM)

- DE Einbauanleitung
- GB Installation instructions
- IT Istruzioni di montaggio
- FR Instructions de montage
- NL Montagehandleiding
- ES Instrucciones de montaje
- PT Instruções de montagem
- DK Monteringsvejledning
- SE Monteringsanvisning
- FI Asennusohje
- GR Οδηγίες συναρμολόγησης
- PL Instrukcja montażu
- CZ Návod k montáži
- TR Montaj kılavuzu
- RU Инструкция по монтажу
- CN 安装说明
- HU Szerelési útmutató
- JP 設置説明書

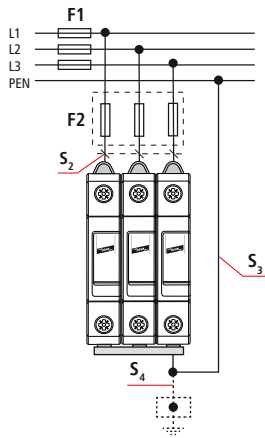


DG S ... (FM)	48	75	150	275	320	385	440	600
U _N / Tol.: 0V ... U _c	42 V	60 V	120 V	230 V	230 V	230 V	400 V	480 V
U _{C, AC}	48 V~	75 V~	150 V~	275 V~	320 V~	385 V~	440 V~	600 V~
f _N	50 / 60 Hz							
max. I _{gG}	125 A gG							
I _{max}	25 kA	40 kA	40 kA	40 kA	40 kA	40 kA	40 kA	30 kA
I _{SCCR}	50 kA _{rms}				25 kA _{rms}			
θ°	-40°C ... + 80°C							
φ	5% ... 95%							
I _{PE}	< 0,5 mA							
IP 1)	20							
L x W x H	90 mm x 18 mm x 73 mm							

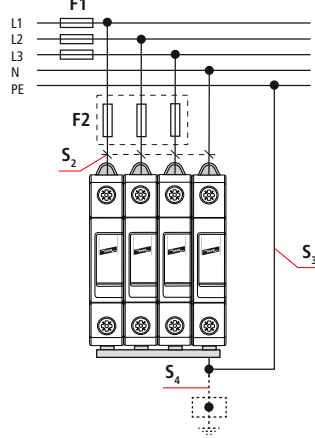
U _{C, DC}	60 V -	100 V -	200 V -	350 V -	420 V -	500 V -	585 V -	600 V -
max. I _{gG}	80 A gG			80 A gPV				
I _{SCCR}	5000 A-							

min. □ L, N, PE	12 mm	12 mm	12 mm	1.5 mm ²
max. □ L, N, PE	25 mm ²	35 mm ²	35 mm ²	16 mm ² Cu
□ ⚠	≥ 15.5 mm			

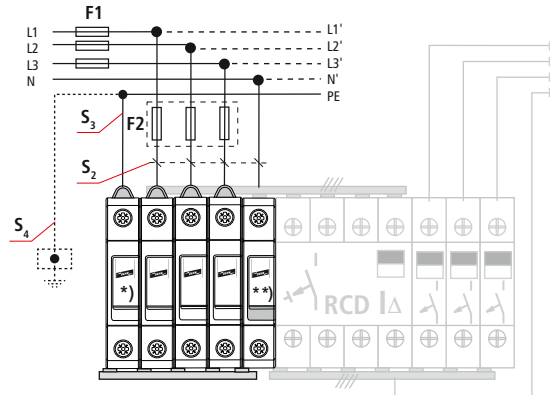
TN-C



TN (-C) -S



TT 3+1



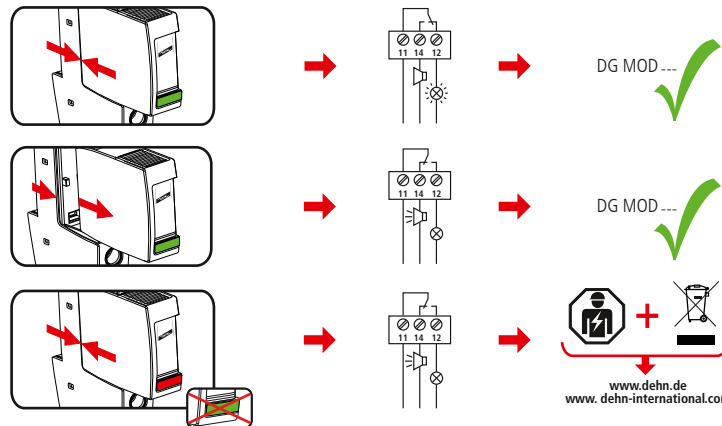
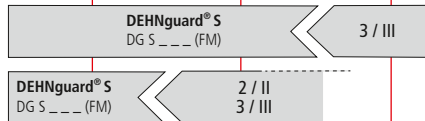
*) DGP C S (FM) 952 030 (035) **) DK 25 952 699



DEHNguard® S DG S ... (FM)	48, 75, 150, 275, 320, 385, 440		600	
	F1 A gG	F2 A gG	F1 A gG	F2 A gG
F1	F1 > 125 A gG	F2 ≤ 125 A gG	F1 > 100 A gG	F2 ≤ 100 A gG
F2	F1 ≤ 125 A gG	F2 ≤ 100 A gG	F1 > 100 A gG	F2 ≤ 100 A gG

DEHNguard® S DG S ... (FM)				48, 75, 150, 275, 320, 385, 440		600	
F1 A gG	S ₂ / mm ²	S ₃ / mm ²	S ₄ / mm ²	F2 A gG	F2 A gG		
25	4	6	6	---	---		
35	4	6	6	---	---		
40	4	6	6	---	---		
50	6	6	6	---	---		
63	10	10	10	---	---		
80	10	10	10	---	---		
100	16	16	16	---	---		
>100	16	16	16	---	100		
125	16	16	16	---	100		
>125	16	16	16	125	100		

LPZ 0_A | LPZ 0_B | LPZ 1 | LPZ 2 | LPZ 3



DEHNguard® S DG S ... FM	
U _N / I _N	AC: 250 V / 0.5 A
	DC: 250 V / 0.1 A 125 V / 0.2 A 75 V / 0.5 A
max. 1.5 mm ²	

