
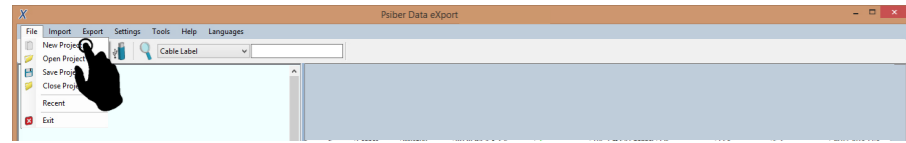




Performing AutoTest

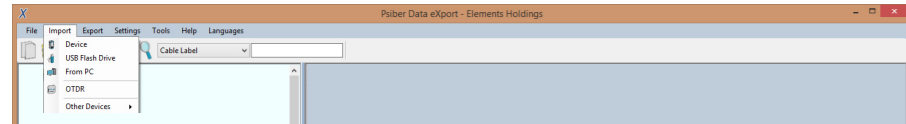
To perform an autotest, press the AUTOTEST button. The test will start automatically if the test setting matches the configuration of set reference stored. If the reference setting does not exist, the device will prompt to perform a set reference.

Using the eXport software

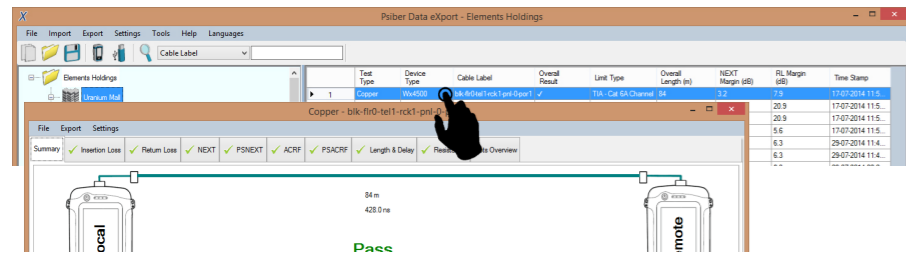
1. Launch eXport software.
2. Create a new project by going to File > New Project or click 



3. To import saved results, go to
 - Import > Device for direct USB connection or click 
 - Import > USB Flash drive for importing from USB flash drives or click 
 - Import > From PC for importing from local hard drives



4. To view detailed results, double click on the cable label and a new window with comprehensive results and plots will be opened.

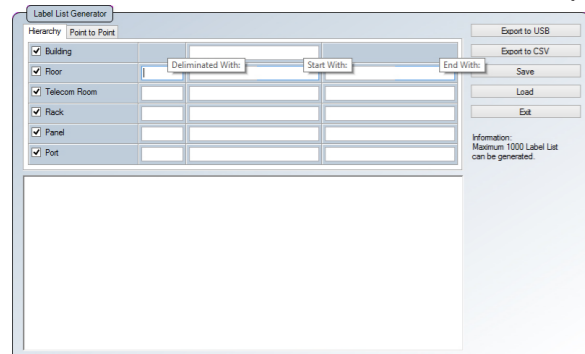


List-Based Testing Hierarchy Label List Generation

The Label List Generator generates cable labels in customizable hierarchical (building name-> floor-> telecom room-> rack-> panel-> port) order before conducting cable certifications, reducing effort from keying labels after every test. The pre-defined labels imported into the device will prevent duplicate testing when conducting in non-sequential orders.

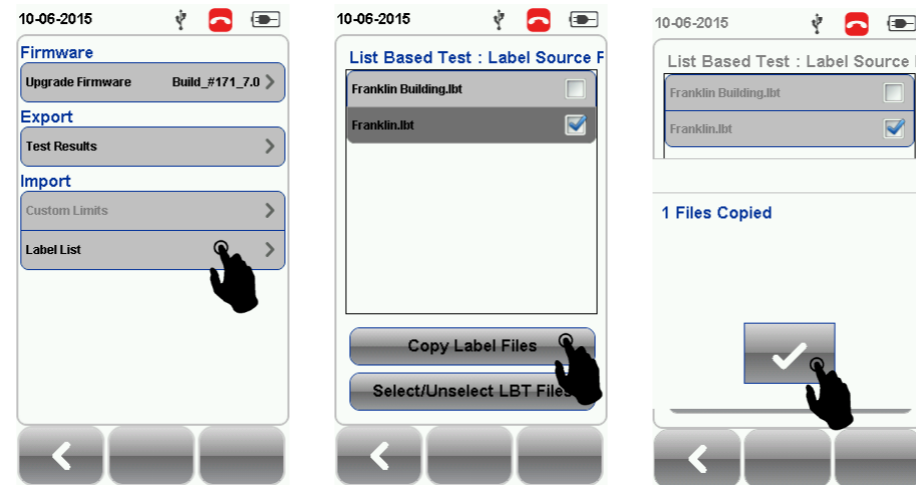
To create label list,

1. Launch eXport and go to Tools > Label List Generator.
2. Enter the first and last label of each tier into the respective fields.
3. Tiers can be disabled by unchecking if it is not applicable.
4. Click the "Save" button to save the list based labels.
5. Insert USB flash drive to PC and click the "Export to USB" to begin export.

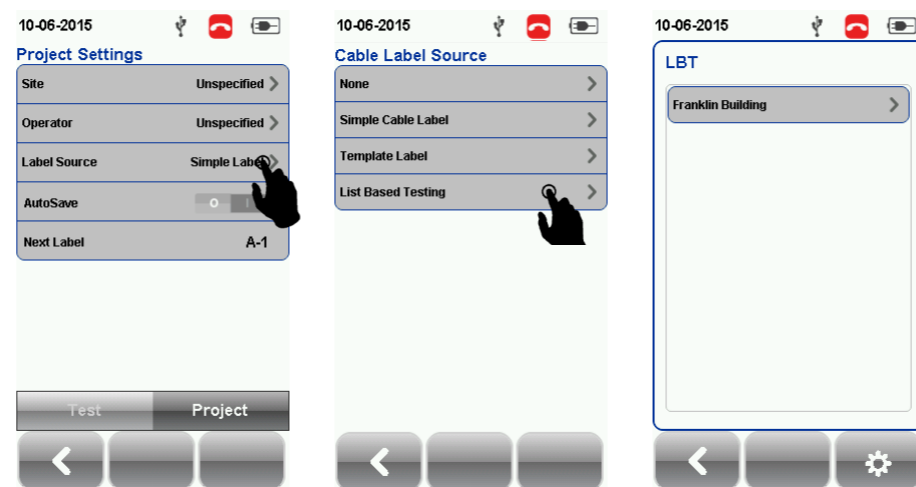


To load label list,

1. Insert USB flash drive to Local unit of WireXpert.
2. Select "Label List" and select the label you want to import.
3. Click "Copy Label Files" to proceed.



4. Press the "SETUP" button > Project Settings > Label Source
5. Select "List Based Testing" and select the LBT file that has just been imported.



6. Press the AUTOTEST button to view list and select label for test. After every test, **PASS** and a **FAIL** will be displayed accordingly.



WireXpert

Quick Start Guide Optical Loss Test Kit



MPO Adapter Kit

This versatile solution enables data center IT managers to get quick and accurate assessment of the quality of MPO links. Additionally, it helps in performing incoming inspection of MPO components like cassettes.

The key feature of this solution is a 5-second Autotest that includes a detection of fiber connection map and measurement of loss on each channel.

MPO Kit (WX_AD_MM_MPO_KIT)

Kit Contents

- 1 x MPO Power Meter (Local) Adapter (WX_AD_MM_MPO_PWRMETER)
- 1 x MPO Light Source (Remote) Adapter (WX_AD_MM_MPO_SOURCE)
- 2 x unpinned to pinned Type A tail cords (WX_AC_MM_MPO_TESTCORD)
- 1 x unpinned to unpinned Type A reference cord (WX_AC_MM_MPO_REFCORD_A)
- 1 x unpinned to unpinned Type B reference cord (WX_AC_MM_MPO_REFCORD_B)
- 1 x MPO connector cleaning kit (WX_AC_MPO_CLEANING_KIT)
- 2 x Type A connector for MPO testing (WX_AC_MPO_CONNECTOR A)



The pair of MPO adapters are not interchangeable as the other adapters; one is a light source (Remote) and the other is the power meter (Local). They should be attached the the WireXpert accordingly.

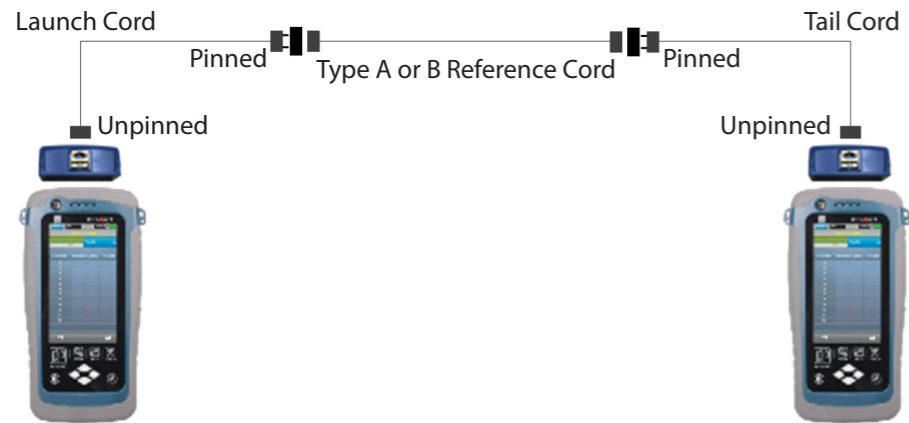
Getting Started



SETUP Configuration for Set Reference

It is recommended to perform a set reference measurement if the Local and Remote units are being paired for the first time. If there is a mismatch in firmware versions or expired calibrations, WireXpert will require you to perform a set reference.

1. Connect the unpinned end of the tail cords to the Local and Remote units.
2. Connect each pinned end of the tail cord to a connector.
3. Connect a Type A or Type B reference cord to the other end of the connectors



4. Press the TOOLS button > Set Reference to begin set reference. Reference cord type should be the same as the trunk cable to be tested.



AUTOTEST Configuration for Set Reference

After configuring the system settings, follow these steps to set up an autotest.

1. Press the SETUP button > Project Settings
 - a. Site – Create or select a Site
 - b. Operator – Create or select an Operator
 - c. Label Source – Select cable labelling scheme. Load labels from USB flash drive if using List Based Testing (LBT).
 - d. AutoSave – Enable option for WireXpert to auto save every PASS result.
2. Press the SETUP button > Test Settings
 - a. Test Limit – Select a test limit
 - b. Channel Selector – Select Channel(s) of cable where loss limit will be applied
 - c. Cable – Select “Generic”
 - d. Connector – Select “Generic”

Please ensure you have the following components before conducting the test;

- WireXpert, Local & Remote units (WX4500)
- MPO Testing Kit (WX_AD_MM_MPO_KIT)

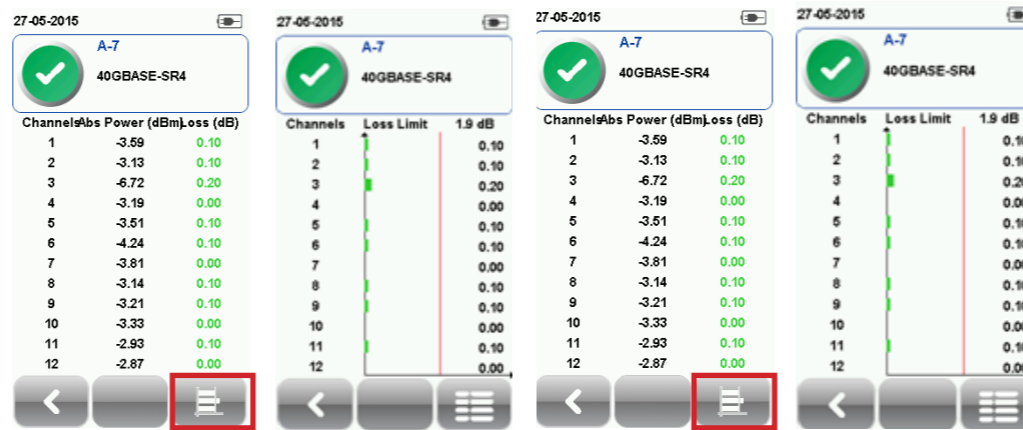


Performing an Autotest

Press the AUTOTEST button once settings and limits have been selected. WireXpert will use the last configuration or factory settings to perform the AUTOTEST if new settings are not configured.

WireXpert will display summarized result with PASS or FAIL once autotest is completed. Press the “View” details button to view the comprehensive result or the “Save” button to save the results.

Depending on the type of trunk cable is under test, Type A, B and C will return different results. Press the buttons on the test result to view the absolute power, loss, polarity and fiber map of the trunk cable.



Type A Trunk Cable

Managing Test Results

Test results can be manually saved by pressing the “Save” button after an autotest is completed. When prompted, enter label name and click “OK” to save.



Managing Test Results

To view saved results,

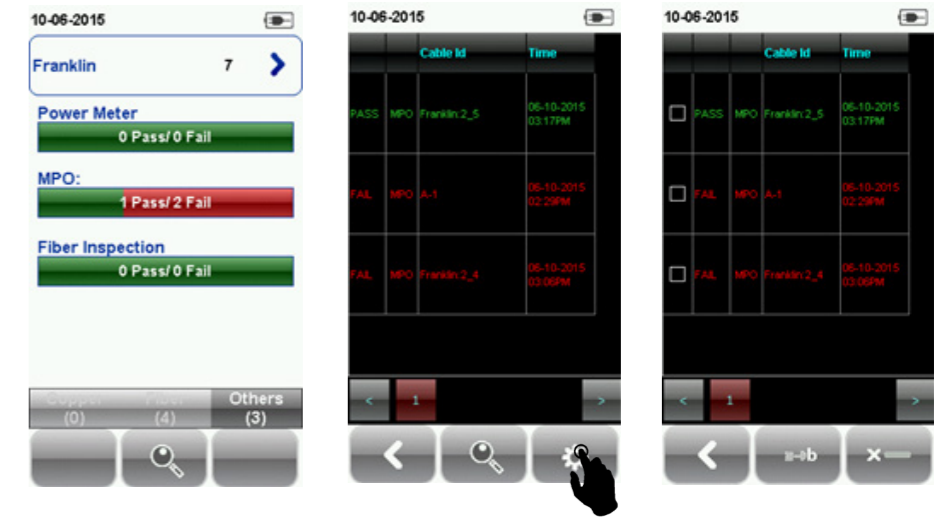
1. Press the “DATA” button.
2. Select “Others” press the “View” button.
3. Select the test results click “View” to view results.
4. Select the next page if for more results.

To delete a saved result,

1. Press the “DATA” button.
2. Select “Others” and press the “View” button.
3. Press the “Manage” button.
4. Select result(s) and press the “Delete” to delete result(s).

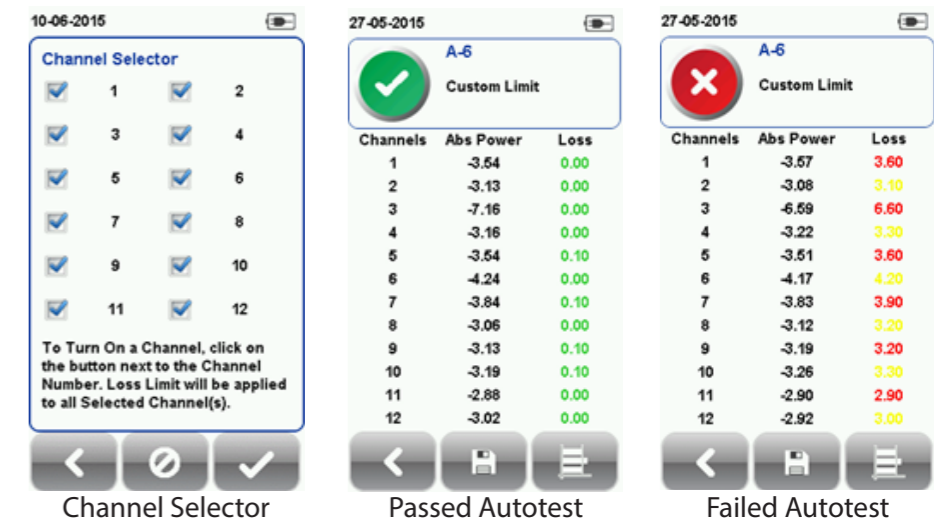
To rename a saved result,

1. Press the “DATA” button.
2. Select “Others” and press the “View” button.
3. Press the “Manage” button.
4. Select result and press the “Rename” to rename result.



SETUP Limit Settings and Channel Selector

Channel Selector provides selection on which channel(s) loss limit will be applied on during an AUTOTEST. Passed and failed result(s) will be indicated in green and red respectively. Deselected channels will be indicated in yellow.



Test Settings provides results oriented configurations necessary to perform an AUTOTEST. Choose from 40GBASE-SR4 and 100GBASE-SR10 limit to perform MPO test. SR4 uses a single MPO ribbon with four strands for transmit and four strands to receive. SR10 uses a 24 strand MPO cable with ten strands for transmit and 10 strands to receive.

Custom Limit: Enter Loss Limit to perform custom limit test. Uncheck “Enable Polarity Check” to bypass polarity check for customized cable.

